

MPLAB® X Integrated Development Environment

Universal and Integrated Tool Set

MPLAB X IDE is a single, universal graphical user interface for Microchip and third party software and hardware development tools. It is the industry's only IDE to support an entire portfolio of 800+ 8-bit, 16-bit and 32-bit PIC® MCUs, dsPIC® DSCs and memory devices.

MPLAB X supports Microchip's compilers, emulators, debuggers and starter kits, as well as many third-party tools. Moving between all of your favorite Microchip tools and upgrading from software simulators to hardware debugging and programming tools is simple with this IDE's seamless user interface.

Powerful Yet User-Friendly Interface

With complete project management, visual call graphs, a configurable watch window and a feature-rich editor that includes code-completion, context menus and a task navigator, MPLAB X is flexible and friendly enough for new users.

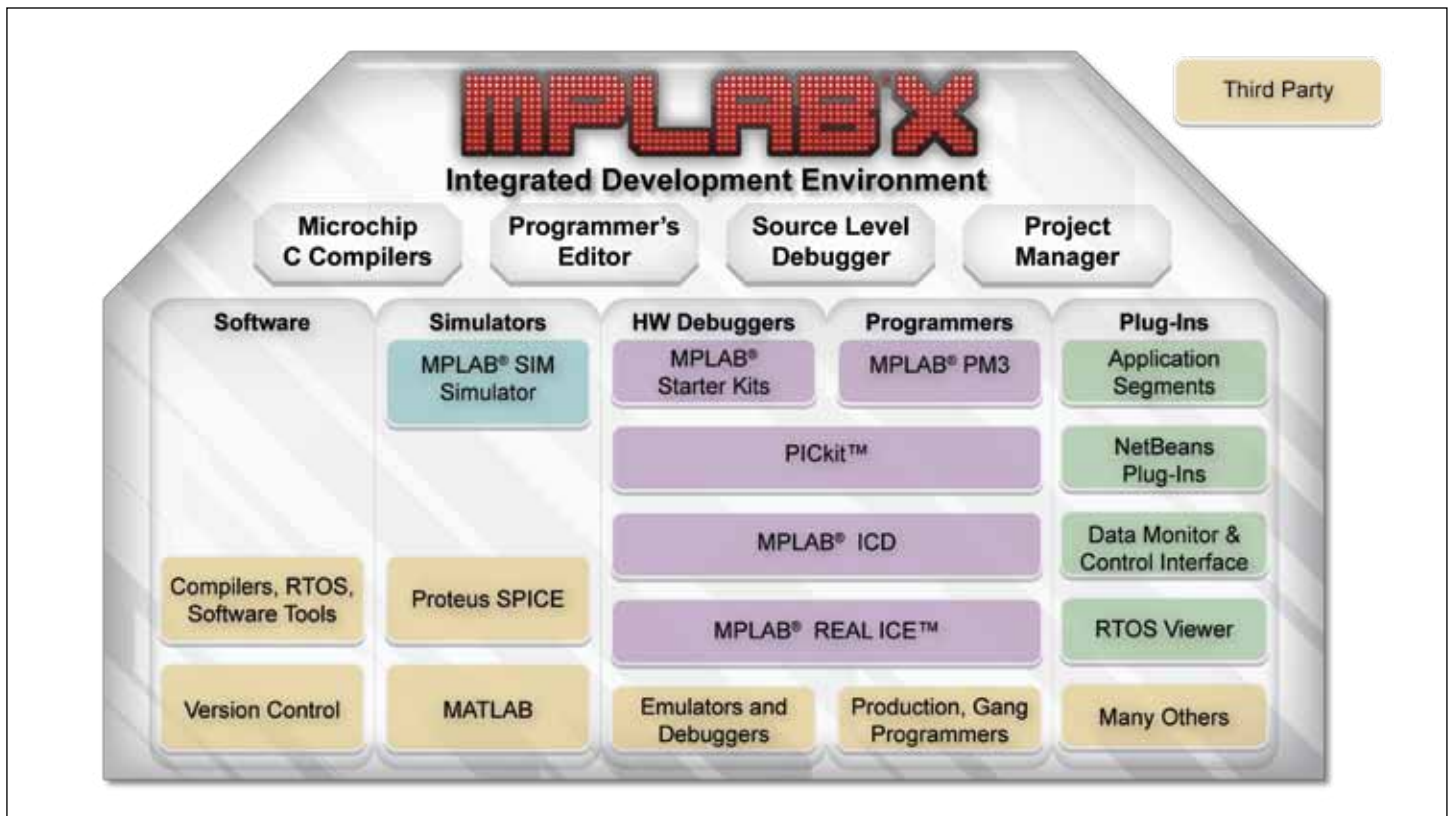
MPLAB X is also fully equipped for the needs of experienced users with the ability to support multiple tools on multiple projects with multiple configurations and simultaneous debugging.

Open-Source Platform

Based on the NetBeans™ Platform, MPLAB X supports a host of free software components and plug-ins from the NetBeans community for high-performance application development customized to your needs. In addition to local file history, MPLAB X is also compatible with revision control plug-ins and Bugzilla.

Cross-Platform

Using MPLAB X, users can run their favorite toolset and develop their next embedded application on Windows®, Linux or Mac OS X.

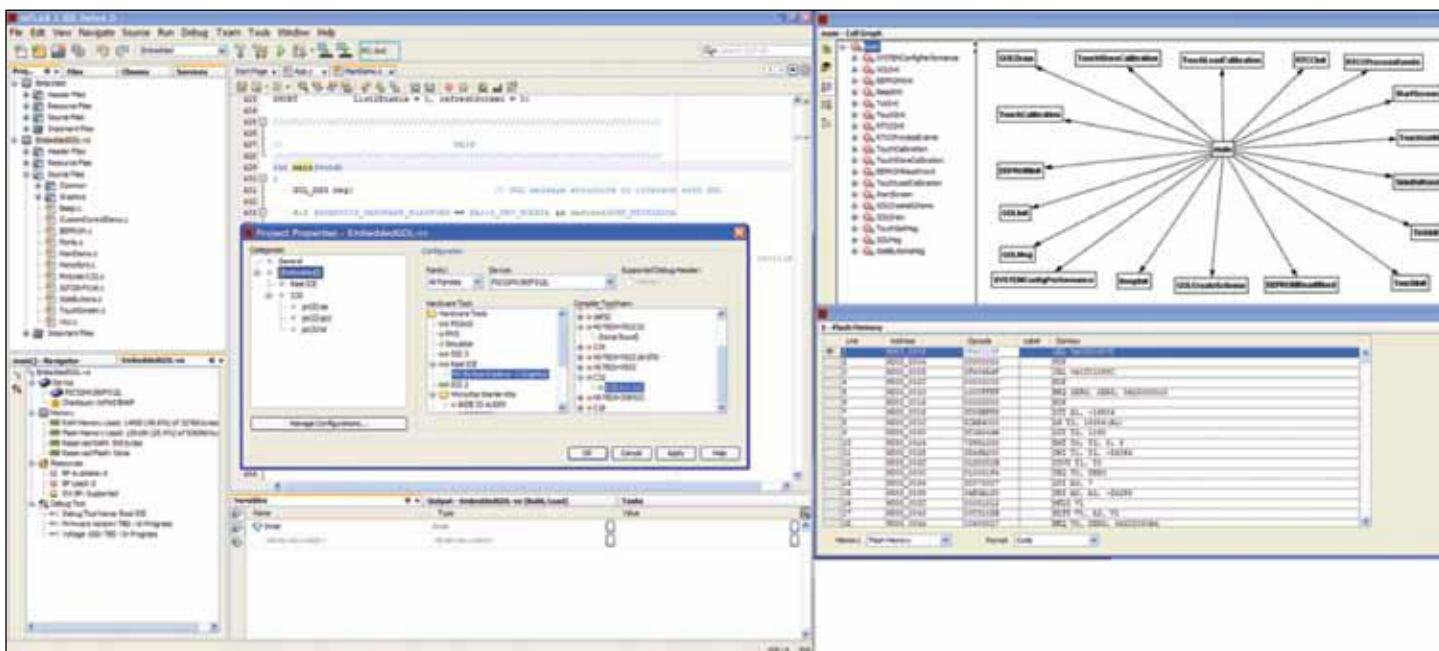


MICROCHIP

Microchip Technology Incorporated

Key Features

- Color syntax highlighting
- Live parsing: flags errors as you type
- Smart code completion makes suggestions and provides hints as you type
- Automatic code formatting, based on user-defined rules
- Refactoring tools to intelligently restructure code
- Fully customizable interface
 - tool bars, tool bar buttons, windows, window placement
- Powerful navigation tools
 - Go to file, Go to type, Go to symbol, Go to header, Go to declaration
- Call-graph window
- Tasks navigator with user-defined bookmarks
 - e.g. //TODO, //FIXME_
- Built-in support for Bugzilla issue tracker
 - Integrated with editor for ease-of-navigation issues
- Project-based workspaces:
 - Multiple projects
 - Multiple tools
 - Multiple configurations
- Simultaneous debugging sessions
- Version-control systems
 - using plug-ins, or
 - local file history
- Built-in Diff (can use external, too)
- MPLAB® X IDE and MPLAB IDE v8 migration features:
 - Import existing projects created in the older version of MPLAB IDE
 - Run both the MPLAB IDE v8 and the MPLAB X IDE, debugging or editing the same project code simultaneously



MICROCHIP

www.microchip.com/mplabx

Visit our web site for additional product information and to locate your local sales office.

Microchip Technology Inc. • 2355 W. Chandler Blvd. • Chandler, AZ 85224-6199

Microcontrollers • Digital Signal Controllers • Analog • Memory • Wireless

The Microchip name and logo, the Microchip logo, dsPIC, MPLAB and PIC are registered trademarks of Microchip Technology Incorporated in the U.S.A. and other countries. All other trademarks mentioned herein are property of their respective companies. ©2011 Microchip Technology Inc. All Rights Reserved. 6/11

DS51984B

