

MANUFACTURING SOLUTIONS START HERE

Browse Newark's huge range of industrial solutions –
ready to ship today!

newark.com/industrial-automation-control

Find more online at

newark.com

1.800.463.9275

FREE 2-4 Day Delivery
on orders over \$150.

Flat rate shipping of \$9.99
for orders under \$150*

* Some exclusions apply

See at newark.com/help-delivery-information



TABLE OF CONTENTS

- | | | | |
|----|-------------------------|----|--------------------------|
| 5 | Automation, switches | 17 | Chemicals |
| 6 | Sensors, power | 19 | Preventative maintenance |
| 7 | Electromechanical | 20 | Modular test systems |
| 9 | Connectors | 22 | Oscilloscopes |
| 12 | Wire, cable, enclosures | 25 | Passives |
| 15 | Safety, protection | 26 | Multicomp Pro |
| 16 | Hand tools | | |

Find thousands of in-stock connectors,
wire, cable, components & test equipment
in stock at newark.com

How may we help you today?

Website
newark.com

Email
order@newark.com
quote@newark.com

Phone
1.800.463.9275
M-F 7:00 AM – 8:00 PM (EST)

Fax
1.888.551.4801

eProcurement systems
We can link with any eProcurement system and our dedicated e-team will facilitate your implementation.
email: eproc@newark.com

Same-day shipping
newark.com/shipping
Domestic Ground: Order M-F by 9:30 PM (EST)
Export: Order M-F by 6:00 PM (EST)
In-stock products normally ship the same day

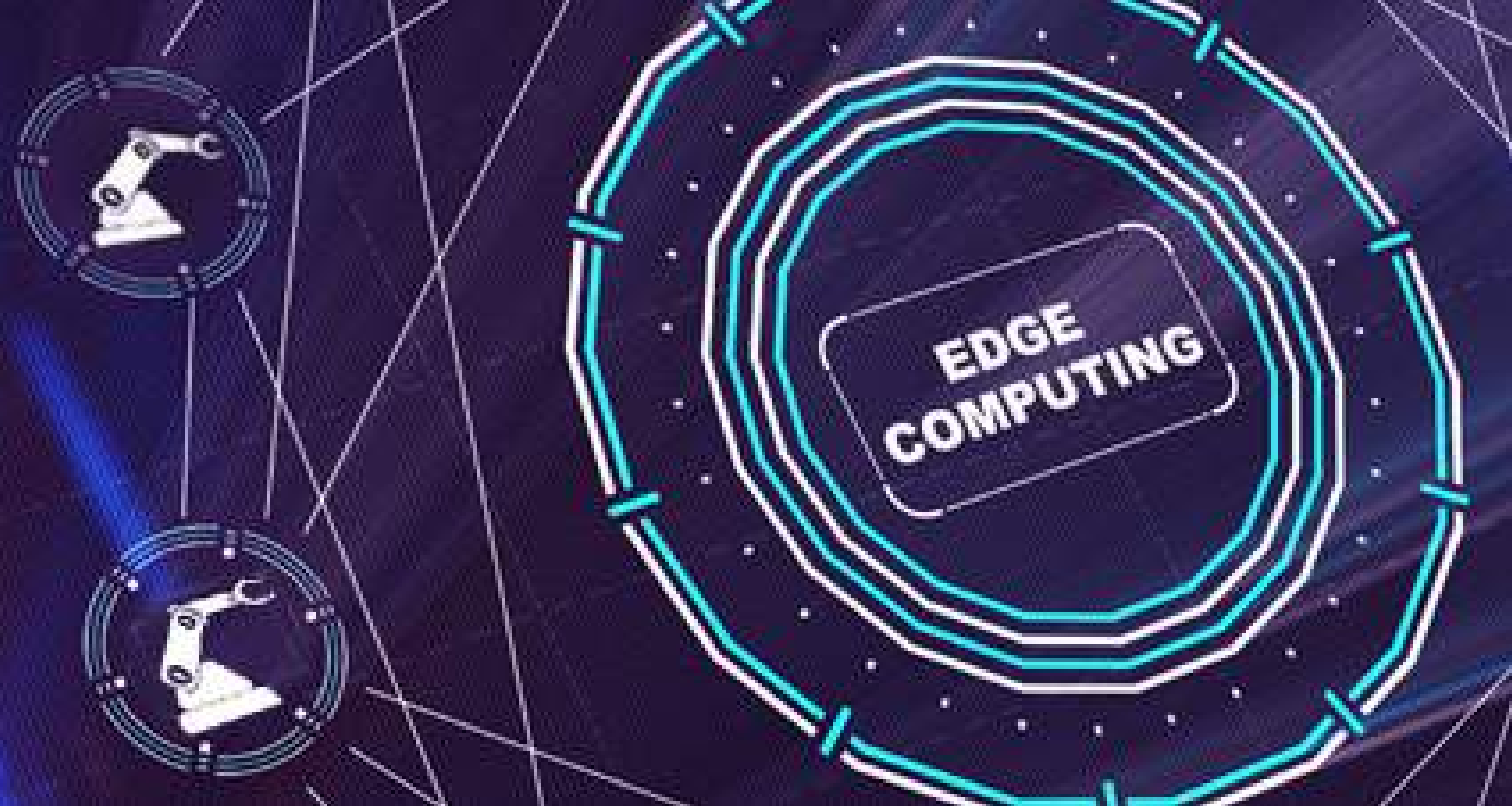
No minimum order fees



You can find us at...



An Avnet Company © 2022 Premier Farnell Limited. All rights reserved. Newark is a trading name of Premier Farnell Limited. This information is of a general nature and is not intended to address the circumstances of any particular individual or entity. No one should act on such information without appropriate professional advice. Please see our website, newark.com, for updated information. The information and pricing contained on our website supersedes the information contained in any printed catalog or other publication. Printed in the U.S.A. WF- 2709371



How to implement different types of edge computing for Smart factory application

More extensive uses of edge computing will use servers that are much closer to the industrial plant, some in shared facilities with others owned or rented directly by the plant operator to host vital, high-performance applications. Industrial units utilize edge-computing hardware which will filter the data produced by local machines and update the most important aspects to a remote data Centre or cloud infrastructure. In Smart edge technologies, IIoT devices, sensors, actuators and controllers are used to track the health of equipment and the moving parts within it. With edge computing, the machine does not need to communicate with the central cloud before making a decision that will preserve the equipment and reduce downtime in real-time.

Distributed computing infrastructure and Data processing are two major components of edge computing. Depending upon the complexity of the analytics needed, the computing infrastructure might range from a simple MCU to a high-end GPU. Edge computing comprises of compute, storage, data management, data analysis and networking amongst others. The information is transferred to the cloud for further analysis or integration into a bigger system depending upon the complexity.

Many of the sensors used on the shopfloor are wireless, communicating via Bluetooth, Wifi, Zigbee, or Thread protocols. These sensors may not use typical fieldbus-over-TCP/IP protocols, instead of relying on IoT-specific standards like CoAP and MQTT. Intelligent industrial gateways often have a CPU capable of running a sophisticated operating system like Linux or Windows 10, as well as software tools like Node-

RED and general-purpose programming languages like C, C++, and Python.

As cited in the whitepaper titled 'Edge computing in the industrial environment' in the section 'The forms of edge computing', the edge devices are formed into thick, thin and micro edge sublayers. The thick edge, or the thick-compute layer, includes the on-premises data centres and shared facilities operated by internet or cellular service providers and others who will provide on-demand access for computing and storage resources. It covers the traditional way which has been used to run SCADA and similar applications. The thin edge and the micro edge represent the layer that is closest to the shop floor machinery and the part of the industrial computing ecosystem that is the most mature. The thin edge includes devices such as PLCs and specialized embedded computers that are built into machine tools and other production equipment. The micro edge represents the sensors that acquire data from process and manufacturing equipment that, traditionally, have been directly attached to PLCs.

Industrial Edge and Enterprise Edge are the two technologies to be considered. In Industrial Edge, large numbers of sensors are connected with different protocols, different data sources, and incompatible data formats, bridging industrial equipment and factory systems to meet the digital world. When coming to Enterprise Edge, it computes resources and manages Industrial Edge and deploys enterprise-level infrastructure on the factory floor.

Use case: Smart Factory Solution

As shown in the below figure, a Smart Factory Solution has the capability to connect multiple sensors to monitor the status, automate & collect data, analyse it and derive useful insights to improve manufacturing operations. Industrial edge computing can be set up in such a way that an enterprise reaps the benefits of both edge computing and the scalable resources of cloud computing.

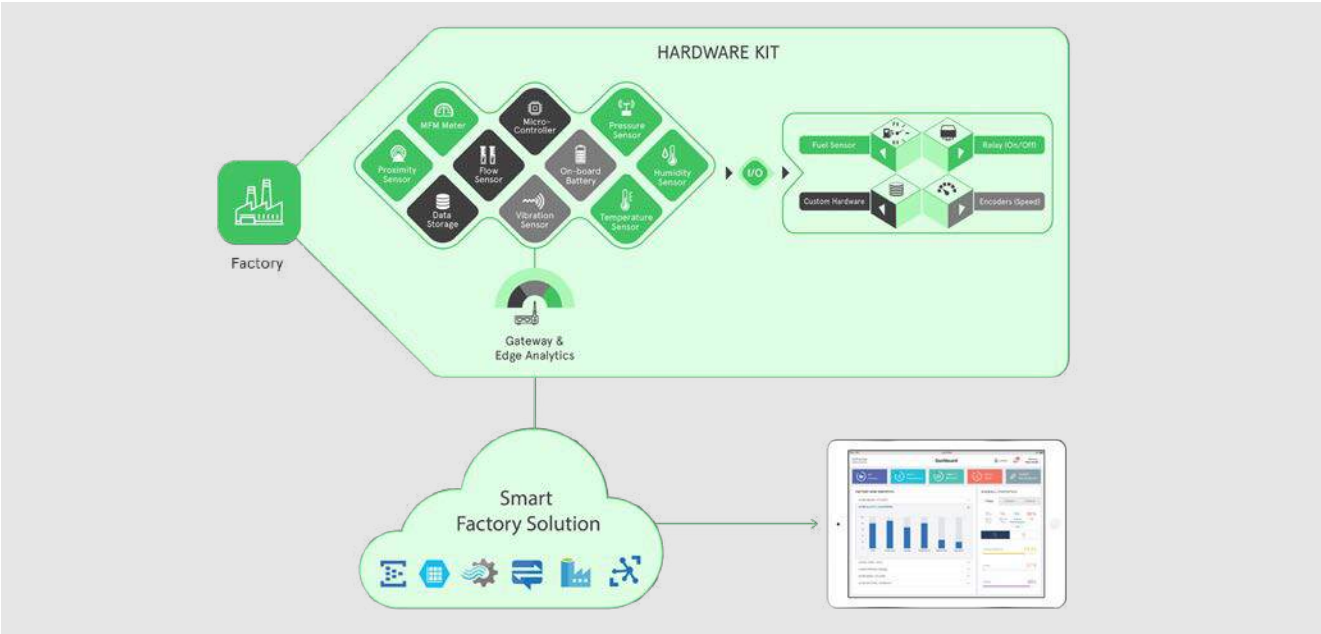


Figure: Smart Factory Solution

As depicted in the preceding figure, it involves Site assessment whereby a technical team will identify machines that are smart, semi-smart and dumb. Smart machines can be connected to the Cloud directly. Semi-smart machines can provide a few data points directly to cloud and require external sensors/actuators in order to send any further data points. Dumb devices cannot provide any data and require external sensors/actuators to connect and send particular data to the cloud.

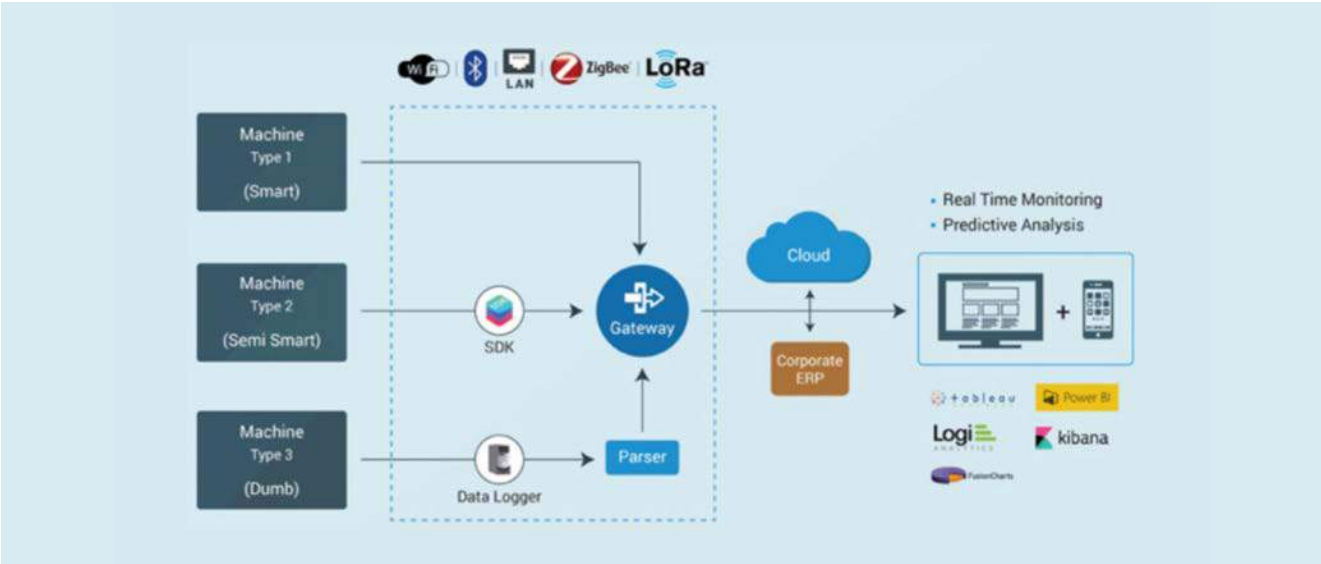


Figure: Smart Factory Solution

Edge analytics pushes the communication capabilities, processing power and intelligence of the edge gateways directly into devices such as programmable automation controllers (PACs). It involves demand forecasting and capacity planning, Predictive maintenance with advanced algorithms, Real-time demand visibility, suggesting supply chain bottlenecks, Detect anomalies at the edge and symptoms for equipment failures.

XT Series Motor Starter



The XT line of IEC power control offers starting and protection solutions ideal for control panels.



Search
[51M9235 at newark.com](#)

Temperature/Process Limit Controllers



The OMEGA® iSeries Limit Controller offers unparalleled flexibility in process measurement and alarm applications, accepting 10 different thermocouple types, 18 RTD combinations or 4 process voltage/current inputs



Search
[34AH4762 at newark.com](#)

Industrial Ethernet Serial Servers



BB-ESRx Serial Servers are built for industrial environments, featuring an IP30, slim line, DIN rail mountable case. They operate from a range of voltages using AC or DC power, feature terminal block power connectors



Search
[23AJ5645 at newark.com](#)

Sure Cross® MultiHop H10 Data Radio



The Sure Cross® wireless system is a radio frequency network with integrated I/O that operates in most environments to eliminate the need for wiring runs.



Search
[67AH5643 at newark.com](#)

D41G Safety Door Switch



High-Coded Guard Lock Safety Door Switch (For Gate) D41G Prevent people from being trapped inside hazardous areas. Integrated door handle offers ergonomic actuator and reduces guard related design efforts



Search
[70AJ6089 at newark.com](#)

V430 microHawk barcode reader



- Autofocus to read codes at different distances.
- Simple configuration with WebLink.



Search
[71AH0225 at newark.com](#)

Anti-Vandal Switches from TE Connectivity



Available in 16, 19, 22 and 25mm, TE's Anti-Vandal Switches are designed as a fit-and-forget solution, utilized for situations where the devices are exposed to harsh environments and extreme conditions.



Search
[84Y3244, 84Y3193 at newark.com](#)

KT Series Tactile Switch



Surface Mount and Through Hole low profile Tactile Switch



Search
[35AH1343 at newark.com](#)

ZE Series Limit Switch



General-purpose Enclosed Switches with High Breaking Capacity and High Durability



Search
[52F4216 at newark.com](#)

CHS Series Capacitive AntiVandal Switch



Capacitive switch with Multicolor illumination. Standard Sensitivity for glass thickness of up to 2mm. Quick and easy installation behind non-conductive materials (glass, plastic, wood,...)



Search
[80AJ9661 at newark.com](#)

8502 Series MILITARY - ENVIRONMENTALLY SEALED TOGGLE SWITCHES



Environmentally sealed with 1, 2 and 4pole circuitry. 2&3 position with maintained and momentary action



Search
[23F1093 at newark.com](#)

Series 82 AntiVandal Switch



Illuminated pushbutton panel mount 22 mm stain-less steel switch



Search
[41AH6844 at newark.com](#)

Dual in-line package (DIP) Switches from TE Connectivity



DIP switches are a package type composed of a series of tiny switches. Available in a variety of actuator styles, these are used in a range of industrial automation applications.



Search
[21R5950, 22R0983 at newark.com](#)

D2DPower/Door Switch



Door Interlock Power Switch with Minimum Contact gap of 3 mm



Search
[36K1916 at newark.com](#)

G3VM MosFet Relay



MOS FET Relays in DIP 4-pin packages that achieve the low ON resistance and high switching capacity of a mechanical relay



Search
[51AH5145 at newark.com](#)

ABP2 SERIES Board Mount Pressure Sensors

Honeywell

SP-001 Ultra-Miniature IR Smart Probe

OMEGA

SDU AC - B Series, DIN Rail UPS

EMERSON
SOLAHD

The ABP2 Series are piezoresistive silicon pressure sensors offering a digital or analog output for reading pressure over the specified full scale pressure span and temperature range.



The Omega Smart IR Temperature Probe is a miniature infrared sensor that measures the surface temperature of a solid or liquid without contact.



The SolaHD SDU AC - B Series DIN Rail UPS combines an industry leading compact design with a wide operation temperature range, enhanced communication and unique installation options.



Search
[76AH8157 at newark.com](#)

Search
[77AH0927 at newark.com](#)

Search
[89AH0112 at newark.com](#)

SDN-C Compact DIN Rail Series

EMERSON
SOLAHD

30W Wall Mount Power Supply

Qualtek

5 ~ 50 Watt Ultra-Compact Encapsulated AC/DC Power Supplies

TRACO POWER

The SDN-C DIN rail power supplies are the next generation of the popular SDN series. These models combine high efficiency and compact size with new visual diagnostic LEDs to offer the most performance available from SolaHD



Universal AC Input/Full Range. Energy Efficiency Level VI. Output Protections: SCP/OC. No Load Power Consumption.



High-density, encapsulated AC/DC power supplies with PCB or chassis mounting, in 5 / 10 / 25 / 50W power levels, designed for industrial applications where space and price are critical.



Search
[40M7849 at newark.com](#)

Search
[66AH4670 at newark.com](#)

Search
[82AH5625 at newark.com](#)

125 Watt Industrial AC/DC Power Supplies in a Compact Package

TRACO POWER

120W and 240W 3-Phase DIN Rail Mount Power Supply

TDK-Lambda

500W Medical & Industrial AC-DC Supply with 1000W Peak Power

TDK-Lambda

Open frame power supplies in 3" x 2" x 1.24" packages with 120% peak power function and a -40°C to +85°C operating range, designed to be compact and cost efficient.



12, 24 or 48V output DIN rail mount power supply with 120% peak power rating up to 2 seconds comes in an enclosed 55mm wide rugged metal case.



AC-DC power solution targeted for low audible noise applications requiring occasional high peak power demands, including medical equipment utilizing DC motors or industrial printers.



Search
[83AH0202 at newark.com](#)

Search
[71AJ0838 at newark.com](#)

Search
[49AJ4785 at newark.com](#)

9PX Series Uninterruptible Power Supplies

EATON
Powering Business Worldwide

24 Watt Desktop Power Supply

MEGA ELECTRONICS INC.

3PN Series Variable Transformer

STACO ENERGY PRODUCTS CO.

ENERGY STAR qualified UPS with graphical LCD interface and robust target power management software makes managing your UPS easy



Features:

- 100-240VAC Universal Input
- Single Output to 24W
- Regulated Output With Low Ripple Noise
- Safety Agency Requirements and EMI/EMS Certified
- Modified and Custom Design Available
- 1 Year Warranty



Cased plug-in model features a ventilated steel case, input line cord and plug, fused NEMA rated output receptacle and illuminated on/off switch.



Search
[02AC8317 at newark.com](#)

Search
[99AC3020 at newark.com](#)

Search
[83F2006 at newark.com](#)

Color Coded Auto Blade Fuse Holders

KEYSTONE

Class 2 Control Transformers

TRIAD

PCD 200 Dual-input process meters

Amphenol

THM mountable fuse holders for Low Profile/Standard Auto blade fuses. 20 AMPs, 500 VAC Rated. Black housing, PN 3557-2, colors available to match fuses for easy PCB identification.



Tamper resistant shrouds for safety; Steel bracket welded to bottom for ease of mounting; Applications include HVAC, Control boards, Lighting, etc.



The PCD200 series are 1/8 DIN digital panel meters that accepts two inputs of either a process current (4-20 mA) or process voltage (0-5V, 1-5V, $\pm 10V$) signal



Search
[22M2712 at newark.com](#)

Search
[98M4387 at newark.com](#)

Search
[88AH8504 at newark.com](#)

Semiconductor Heater

Protect electrical, pneumatic, hydraulic and mechanical equipment from low temperatures, condensation and corrosion with this heater. Positive Temperature Coefficient heating element with clips for mounting on 35-mm DIN rails.

Search
[79K6138 at newark.com](#)

Keep Your Electronics from Overheating for Optimal Performance

AxiForce tubeaxial fans excel in delivering quiet, powerful, & efficient cooling to help ensure the safe and reliable operation of automation control units, enclosures, 5G power modules, and more!

Search
[49AJ4777 at newark.com](#)

Industrial Ethernet Switches

A range of 5 and 8 port 10/100 and Gigabit Industrial Ethernet Switches. No software required. Simply plug in and connect.

Search
[39AH5508 at newark.com](#)

Power Fuses – Voltage Ratings Up to 800V

Power fuses with voltage ratings up to 800V, offer optimal protection against overload and short-circuit events in high power AC/DC circuits. Typical applications include Solar, air conditioning units, Electric Vehicles.

Search
[50AH4270 at newark.com](#)

AC-DC DIN Rail PSUs

Universal Input 90-264VAC, 100% Full Load Burn-in Test, LED Indicator for DC Power On and DC Low. Output Power options from 15W to 480W, 5, 12, 24 or 48VDC.

Search
[69AH1566 at newark.com](#)

Raspberry Pi 4 DIN Rail Mount Enclosures

No screws, no glue – just add your Raspberry Pi filling! Great way to industrialize your Pi 4 with room for a Pi HAT.

Search
[33AH6157 at newark.com](#)

Open & Closed Frame AC-DC Converters

High efficiency, high reliability, these converters with power options from 100W to 350W, offer excellent EMC and safety performance, and meet IEC/EN/UL62368 standards.

Search
[30AJ5462 at newark.com](#)

Open & Closed Frame PCB DC-DC Converters

Highly efficiency (up to 96%) switching regulators. Ideal substitutes for three-terminal linear regulators

Search
[92AH5605 at newark.com](#)

DIN Rail Mount DC-DC Converters

Low profile converters with 3:1 Wide Input Range, Short Circuit Protection, Internal Input Filter and Remote ON/OFF.

Search
[83AH9985 at newark.com](#)

IP67 Outdoor Combo Antennas

Panel mount and through hole IP67 Combo Antennas (2xLTE, 1xGPS/GNSS).

Search
[41AH4617 at newark.com](#)

IP67 Outdoor OMNI Antennas

OMNI outdoor antennas with DSRC Urban (5.9 GHz) or LoRa (863-928 / 902-928 MHz) band options.

Search
[41AH4619 at newark.com](#)

Pi-Box Pro 4 Case for Raspberry Pi 4

A rugged industrial enclosure with heatsink kit for the Raspberry Pi4. Available in silver or black.

Search
[77AH1219 at newark.com](#)

Pi Box Pro 4 Rack Fronts for Raspberry Pi 4

A 1U 19" extruded aluminum rack panel milled to fit removed Pi-Box Pro 4 cases. Available in 1, 2 or 3 unit versions and come with Pi-Box Pro 4 Cases included.

Search
[55AJ2669 at newark.com](#)

Rectangular Neon Indicators

250V Green, Red & Orange rectangular indicators with panel sizes including 13x19mm, 11x30mm and 22x30mm

Search
[85AJ3417 at newark.com](#)

Dome Neon Indicators

250V Green, Red & Orange dome indicators with 10, 12 and 13mm mounting hole diameter options

Search
[85AJ3430 at newark.com](#)

Driving Industrial IoT Innovation



ADVANTECH

Enabling an Intelligent Planet

Wireless I/O



Advantech offers a broad range of wireless I/O solutions from remote data acquisition to real-time control. Our solutions are widely used in IoT or other industrial applications, such as facility monitoring, environment monitoring, and industrial process control. Advantech's new generation of remote I/O devices bring an IT oriented spirit to the market.

Panel PCs



Advantech's Industrial All-in-One Touch Panel Computers excel in harsh, demanding environments. Their systems include fanless designs and high G shock vibration resistance for industrial grade HMI computing requirements. With available screen sizes between 3.5" and 31.5" in both 4:3 and 16:9 configurations, most manufacturing needs are easily matched.

Industrial PCs



These modular computer systems take aim at machine automation applications such as vision inspection, AOI, packaging inspection, process automation and intelligent monitoring. Their rugged, compact designs complete with POE and the latest Intel Core processors, can also be applied in edge intelligent applications, such as edge computing, or to simply deliver enhanced computing and graphic performance.

Industrial Connectivity



Advantech is a global leader in industrial communication, industrial Ethernet managed/unmanaged switches, industrial Fieldbus gateways, cellular routers, media converters, serial device servers, and data acquisition (DAQ).

MPRONTO-M12 M12 Push-Pull Connectors**Amphenol®**

World's First True Backward Compatible To All M12*1.0 Thread Socket Unique Technology Patent



Search
[86AH2027 at newark.com](#)

Switchcraft NH Series RJ45 Panel Mount Connectors**Switchcraft®**
CONNALL®
HARSH ENVIRONMENT CONNECTIVITY SOLUTIONS

RJ45 connectors from Switchcraft are mounted in a rugged metal shell, making them easy to mount for any critical application. The new NH series has a smaller, space saving design.



Search
[70AJ0899 at newark.com](#)

USB-C Male to USB-C Female Extension cables**CLIFF**

Support Power Delivery (PD) charging at 60 watts (20v/@3A), USB 3.1 (Gen 1) 5Gb/s data transfer speeds, and can be used as a video cable 5k@60Hz video output (Thunderbolt 3) and audio transmission.



Search
[38AJ3572 at newark.com](#)

Connector Tooling**ASTRO TOOL CORP.**
CONNECTOR ASSEMBLY TOOLING

A wide range of Crimp Tools, Insertion & Extraction Tools, Locators in stock



Search
[90B3914 at newark.com](#)

D-Subminiature Connectors**EDAC**

EDAC offers an extensive range of industry standard D-Subminiature connectors. Our D-Sub+ family are available in standard density with 9, 15, 25, 37, and 50 contacts or high density versions with 15, 26, 44, 62 and 78 contacts.



Search
[51AH2109 at newark.com](#)

Ultra-compact Nano SIM connector with card detection functionality**GCT**

Push-push Nano SIM card connector with card detection switch functionality and a height of just 1.44mm, making it suitable for a wide range of cellular-based applications. Solder tabs & locating pegs ensure exceptional stability



Search
[50AJ8232 at newark.com](#)

Advantage™ Series Switch-Rated Pin and Sleeve Connectors**HUBBELL**
Wiring Device Reference

Hubbell's innovative Advantage™ Series Switch-Rated pin and sleeve are now available with three optional Control Contacts. These break before main contacts can be used to communicate with auxiliary devices such as PLCs and VFDs.



Search
[93Y5773 at newark.com](#)

ODU MINI-SNAP® L Series - Advanced Circular Push-Pull Locking Connectors**ODU**
A PERFECT ALLIANCE

The ODU MINI-SNAP® L series is a self-locking circular connector with a robust metal housing and wide range of sizes and pin configurations.



Search
[41AH0847 at newark.com](#)

Circular connectors with threaded joint**Lumberg**
passion for connections

Socket acc. to IEC 61076-2-106, IP40, straight version, with threaded joint, solder terminals and short bend protection



Search
[82AH3329 at newark.com](#)

Vibration? Dust? Moisture? Our panel feed-through adapters are M12 X-Code IP67 rated to RJ45 IP20 rated!**METZ CONNECT**
We realize ideas

METZ CONNECT's M12X/RJ45 feed-through adapters provide high performance, 10 GBit Ethernet cabling and 10 GBit device connection in communication cabling and automation and control equipment.



Search
[85X1484 at newark.com](#)

Sure-Hold Surface Mount PCB Pins**MILL-MAX**

Mill-Max is expanding its range of SMT pins with the introduction of three new series featuring the Sure-Hold grooved base design. Each pin has four channels machined into the SMT base providing excellent solder flow



Search
[99AJ4140 at newark.com](#)

NorComp's POWER-D Mixed Contact Connectors Series**NORCOMP**

The NorComp POWER-D line of d-sub mixed contact connectors feature "Solid-Pin" machined contacts, offering high reliability performance for the most challenging design applications.



Search
[62AJ7222 at newark.com](#)

Positronic D-Subminiature Backshells, Contacts & Accessories**Amphenol®**

Standard, High-Density, Combo-D, IP67 Waterproof, Stacked and hermetic connectors available



Search
[67AH5576 at newark.com](#)

Turret Solder / Press Mount Terminals**CAMBION**
A UE Company

A wide range of Turret Solder / Press Mount Terminals in stock from Cambion



Search
[40F6054 at newark.com](#)

Heavy current spring clamp system terminal block**Amphenol®**

PCB soldering terminal block with 4 pins per position for high rating current. Slant opening is ergonomic for wire insertion and withdrawal.



Search
[44AJ9998 at newark.com](#)

175A/600V Power Blocks



BlockMaster's HP-ATB-175 Series, 175A, 600V, 3-pole terminal blocks are extremely versatile with five different termination styles. Applications include Bitcoin Server Farms, HVAC, Standby generators.

Search
[14AC6145 at newark.com](#)

PCB & Surface Mount Screw Terminals & Blocks



Suitable for today's requirements of high current terminations on printed circuit boards. Available in both straight and right angle versions for thru hole terminals.

Search
[21AJ9736 at newark.com](#)

134 Series Power Distribution Blocks



Power Distribution Blocks (PDB's) feed multiple power circuits of industrial control panels. Most commonly used in motor control panels built under UL508A, Marathons Special Product's PDB's comply to the latest UL standards

Search
[78AC5556 at newark.com](#)

Panel Mount 250V 30A Fuseholder



An economical connector for use with a wire or either a ring or spade type terminal. Holds fuse size 9/16-inch diameter x 2-inch. Used for A2Y, CRN, NLN, NON, NRN, OT, OTN, RLN and RF fuses.

Search
[96F5348 at newark.com](#)

75 Ohm BNC Connectors - 12G Compliant



12G-SDI compliant BNC quick connect design for all popular broadcast cables including Belden 1855A, 1505A, and 1694A. New designs include Belden 4694P, 4694R, 4794P, 4794R, 4505P, 4505R, 4855P and 4855R.

Search
[94B9461 at newark.com](#)

75 Ohm BNC Connectors - 12G Compliant



12G-SDI compliant BNC quick connect design for all popular broadcast cables including Belden 1855A, 1505A, and 1694A. New designs include Belden 4694P, 4694R, 4794P, 4794R, 4505P, 4505R, 4855P and 4855R.

Search
[96B1230 at newark.com](#)

SMA Female to Female Bulkhead Hermetic Adapter



This SMA in-series adapter is IP68 rated and operates to a frequency of 18GHz. It is designed rigorous environments and harsh elements.

Search
[43AC7518 at newark.com](#)

2.92mm Female to Female Bulkhead Hermetic Adapter



This 2.92mm in-series adapter is IP68 rated and operates to a frequency of 40GHz. It is designed rigorous environments and harsh elements.

Search
[84AC4141 at newark.com](#)

2600 Series PCB Terminal Blocks



Feature Push-In CAGE CLAMP® connection technology allow for increased pin spacing and double pinning to allow for expanded current capacities while maximizing voltage ratings.

Search
[74AH2827 at newark.com](#)

WAGO Rail-mount terminal blocks TOPJOB® S with lever and Push buttons



WAGO rail-mount terminal blocks are available in three different actuation variants: lever, push-button or operating slot - the right rail-mount terminal block for every application.

Search
[28K7412 at newark.com](#)

Souriau TRIM TRIO® UTGX series



Eaton's latest addition to the Souriau TRIM TRIO family is the UTGX series - a ruggedized, quick mating connector for harsh industrial applications.

Search
[22AJ1714 at newark.com](#)

Off-the-Shelf Mega-Fit Single-Row Cable Assemblies



Off-the-Shelf Mega-Fit Single-Row Cable Assemblies deliver a 25.0A current rating and offer a variety of cable lengths with a compact connector to support both prototyping and global production

Search
[88AH3261 at newark.com](#)

Trident Series - Robust Metal or Plastic Circulars



High performance and ruggedized interconnect with 4 to 48 circuits, up to 30 A current rating mixed power and signal variants, sealing up to IP67, high voltage capability, UL 94 V-0 flammability performance and durability up to 500 mating cycles.

Search
[47M0088 at newark.com](#)

e-Power Lite Connector System



Rectangular, Plastic, Press fit, Touch-Proof, Environmental, Power Connector

Search
[05AJ8838 at newark.com](#)

M5 Sensor Connectors and Cable Assemblies



The most compact connector type in the M-Series range, our waterproof M5 sensor connectors come in straight and angled forms with PVC or PUR overmolded cable connector options and a variety of panel mount receptacles.

Search
[37AC2337 at newark.com](#)

RUGGEDIZED CONNECTIVITY SOLUTIONS



YOUR COMPLETE SOURCE FOR QUALITY RF CABLE ASSEMBLIES

- CUSTOM LENGTHS
- BROAD COAXIAL CABLE OFFERING
- MULTIPLE CONNECTORS
- IN-STOCK

NEED RELIABLE CONNECTIVITY? COUNT ON L-COM

L-com[®]
an INFINIT[®] brand

L-com 125V Mains Power Cord



L-com NEMA 5-15P cable assembly is IEC 60320 C13 compliant and provides superior performance for 15A, 125V applications requiring 4.57m length



Search
[07AH3274 at newark.com](#)

20kA DC Block RF Surge Protector



L-com DC Block RF lightning arrestor provides reliable performance between 125MHz to 1GHz for 375W applications protection



Search
[69AC7814 at newark.com](#)

IP67 TNC Bulkhead Jack to Right-Angle AMC4 Plug on 1.13 mm



Waterproof 50 ohm TNC to AMC4 assembly designed on micro-coax cable for increased flexibility. Ideal for applications with space constraints.



Search
[62AJ3647 at newark.com](#)

IP67 SMA Bulkhead Jack to Right-Angle AMC Plug on 1.13 mm



SMA to AMC cable assemblies feature a small footprint and low profile. Waterproof 50 ohm configuration compatible with industry-standard U.FL interface for additional mating options.



Search
[37AJ2326 at newark.com](#)

M12 Cordset, 5 Position, 22 AWG, Male Straight to Female Straight, 5M



Mueller Electric offers an extensive line of instrumentation cables. Our C5AC06M005 is a 5 meter M12 cordset configured as a 5 position, 22 awg male straight M12 to a female straight M12.



Search
[67AJ1437 at newark.com](#)

M12 Cordset, 4 Position, 22 AWG, Male Right Angle to Female Straight



Mueller Electric offers an extensive line of instrumentation cables. Our C4BC05M002 is a 2 meter M12 cordset configured as a 4 positions, 22 awg male right angle M12 to a female straight M12.



Search
[67AJ1421 at newark.com](#)

Passive Ethernet and InfiniBand Copper Direct Attach Cables (DAC)



Volex DACs are designed for applications requiring high-performance and bandwidth interconnects. Each cable assembly is carefully terminated for the highest reliability.



Search
[83AH8638 at newark.com](#)

Rack-mount Power Distribution Strip



Rack mounted PDUs provide convenient and reliable power to equipment mounted in cabinets or racks. 10 outlets, 20amp, 120VAC, with 2000-joule surge protection.



Search
[27M2318 at newark.com](#)

NEMA/IP rated Fiberglass reinforced plastic enclosure



The PTQ Series of fiberglass boxes is made from UV stabilized 10% glass fiber reinforced polycarbonate plastic. The submersible boxes meet IP67 and NEMA 1, 2, 4, 4x and 6



Search
[22AJ1474 at newark.com](#)

Telescoping Slides



Most complete selection of standard and custom slides: solid, roller, and ball bearing slides as well as bottom mount slides are available.



Search
[23C6580 at newark.com](#)

RCK Knockdown Rack Cabinet



Ideal for your Homelab and Pro-AV applications, these racks are self-squaring and take just minutes to assemble. Cabinet frame constructed in 16-gauge steel. and m mounting rails are constructed in 12-gauge steel.



Search
[67AJ1480 at newark.com](#)

1590Z Series Diecast Aluminum Enclosures



Rugged, diecast aluminum alloy (tough yet easy to machine), type 4X/6P electronic instrument enclosure has thick walls, is watertight, and is UL listed.



Search
[70AJ5767 at newark.com](#)

SMART SENSOR CSS 014 | DC 24 V



The CSS014 electronically records temperature and humidity then convert the measured data into standardized analog 4-20mA or digital IO-Link signal. Converted value signals can be utilized/processed by a control/monitoring unit.



Search
[30AH0104 at newark.com](#)

Slimline Blower 3 VDC, DC, 17 x 3.2 mm



Slim and powerful DC blowers are perfect for ultra-thin cooling applications. Features excellent performance & sound quality.



Search
[71AH2344 at newark.com](#)

AC Axial Circular Fan



115VAC high speed Axial Fan with 2-ball bearing and wire leaded power connection. High quality aluminum die casting. 254mm x 89 mm frame with glass fiber impeller.



Search
[58P0936 at newark.com](#)

HelaGuard Non-Metallic Conduit Fittings, Connectors, Clips

Snap-On, offered in Various degrees, External NPT thread provides a secure connection.

HellermannTyton



Search
[17AC5984 at newark.com](#)

IP68/69K Metal Cable Glands

Nickel-plated brass cable glands with IP68/69K sealing available with PG or Metric threads. Lock nuts included.

multicomp PRO



Search
[49AC8451 at newark.com](#)

EMC Metal Cable Glands

Nickel-plated brass EMC Metric cable glands with IP68 sealing. Lock nuts included.

multicomp PRO



Search
[49AC8477 at newark.com](#)

IP68/69K Nylon Cable Glands

Nylon cable glands with IP68/69K sealing available in black, grey or white, with PG or Metric threads. Lock nuts included.

multicomp PRO



Search
[49AC8423 at newark.com](#)

IP68 Nylon Cable Glands with Strain Relief

Nylon cable glands with IP68 sealing available in black or grey, with PG or Metric threads. Lock nuts included.

multicomp PRO



Search
[49AC8468 at newark.com](#)

316 Stainless Steel Cable Ties

316 SS cable ties with ball locking mechanism. Strong resistance to chemicals such as acid and alkalis. Operating temperature -112°F to +1000°F.

multicomp PRO



Search
[71AC1822 at newark.com](#)

Cold Weather Cable Ties

Prevent downtime replacing ties from cracking or breaking from extreme cold temperatures. These cable ties with their enhanced flexibility and strength, withstand severe temperatures down to -40°F.

multicomp PRO



Search
[41AH7380 at newark.com](#)

Heavy Duty Cables Ties

Nylon 6.6 Heavy Duty Cable ties available in UV black or Natural and 120lb or 175lb Tensile Strength

multicomp PRO



Search
[66AH4302 at newark.com](#)

Metal Detectable Cable Ties & Mounts

Metal content is blended throughout cable ties & mounts and has a 2 to 3 times stronger signal strength compared to the competition.

multicomp PRO



Search
[66AH4251 at newark.com](#)

Flexible, Flame-Retardant, General Purpose, Polyolefin Tubing

2:1 shrink ratio. Superior abrasion and solvent resistance when compared with that of many flexible, general purpose polyolefin tubing.



Highly Flame-Retardant, Very Flexible, Low-Shrink-Temperature, Polyolefin Tubing

2:1 shrink ratio. Low shrink temperature reduces installation time and the risk of damage to temperature-sensitive components. Very flexible; doesn't easily wrinkle when bent.



Search
[45AJ6571 at newark.com](#)

Search
[45AJ6590 at newark.com](#)

Self-Laminating Vinyl Wire and Cable Labels

Self-Laminating Vinyl (B-427) is an excellent material for wire and cable identification. This material has good clarity, conformability and is self-extinguishing.



Search
[04H4306 at newark.com](#)

BMP51 Label Printer

The BMP®51 Label Printer has all the latest features for printing on the go: a large display screen, hassle-free media cartridges, fast print speed and more.



Search
[89T4128 at newark.com](#)

Panduit Raceway Duct Cover

The C1.5LG6 PVC Duct Cover with Protective Film features a temporary protection film that protects duct covers from damage during the installation process. The cover features a non-slip, liner to prevent cover slide.



Search
[78F683 at newark.com](#)

Panduit Narrow Slot Wiring Duct

The F1.5X3LG6 Panduit Lead-Free PVC Narrow Slot Wiring Duct features a narrow slot/finger design that closely matches the spacing of high-density components.



Search
[99B0760 at newark.com](#)

SELECTION SETS US APART

Since first introducing the original Chassis Trak® slide more than 60 years ago, General Devices has engineered thousands of slide solutions. Today, design engineers can choose from the most complete selection of standard and custom slides available from one single source.

SOLID BEARING SLIDES – rugged and cost effective slides for periodic maintenance

ROLLER BEARING SLIDES – reduced push-pull force for heavier loads

BALL BEARING SLIDES – quiet, smooth travel for high cycle applications

BOTTOM MOUNT SLIDES – space saving, heavy duty capacities up to 1,500 lbs.

CUSTOM SLIDES OF ALL KINDS – for applications from rack mount electronics and computer equipment to emergency vehicles, mobile work trucks, and broadcast vehicles.

MORE SLIDES ... FOR MORE SOLUTIONS ... TO MORE APPLICATIONS ... FOR MORE OPPORTUNITIES.



CHASSIS TRAK
Telescopic Slides

VENT RAK
Cabinets & Enclosures

General Devices Company
P.O. Box 39100
1410 S. Post Road
Indianapolis, IN 46239-0100
Made in U.S.A.
Phone: 317-897-7000
Fax: 317-898-2917
www.generaldevices.com



**SOLID/ROLLER
BEARING SLIDES**

CABINETS/ACCESSORIES

**BOTTOM MOUNT
SLIDES**

**BALL BEARING
SLIDES**

91-PC2-US-01H AIR BLOWER IONIZER, BENCHTOP, 120VAC

Simco-Ion's new Aerostat PC2 provides complete mini-environment ionization protection. The PC2 offers outstanding charge neutralization for targeted mini environments and has sufficient air velocity to provide static control up to 4 feet

Search
[52AH2704 at newark.com](#)

**91-GUARD-01 Ionizing Blower, Overhead, 120 V, Aerostat Guardian, 42.75" x 4" x 6.75", Aerostat Series**

Simco-Ion's Aerostat Guardian Overhead Ionizing Blower provides superior static charge decay over an entire work surface area. Equipped with task lighting and an integrated heater

Search
[07AH2007 at newark.com](#)

**91-XC2-US-05HA Ionizer, Benchtop, Extended Coverage, Alarm, 120 V, 14.13" x 7.2" x 6.5", Aerostat XC2 Series**

Simco-Ion's new Aerostat XC2 provides complete wide area ionization protection. The XC2 offers outstanding coverage for larger areas with <12 second discharge times at 6 feet (1.8m) distance from the face of the blower.

Search
[72AC8591 at newark.com](#)

**770116 IONIZER, BENCHTOP, 120VAC Steady-state DC Benchtop Ionizer with Ion Gauge™ Technology**

The new ionizer yields optimal neutralization efficiency by using an ion collecting plate to sample both balance and discharge time. It also features less than 2 seconds Discharge Time with ± 3 Volts Balance

Search
[24AK6672 at newark.com](#)

**65130 Mat Roll, 2 Layer Dissipative, Vinyl, 24" x 50', Blue**

Provides reliable path to ground and eliminates static charge generation as a worksurface table mat, shelf liner, and cart liner.

Search
[73AJ0347 at newark.com](#)

**PCL1001218 Anti Static Bag, Static Shielding (Metal-In), 12" x 18", 304.8 mm, 457.2 mm, 71.12 μ m**

PCL100 clean series metal-in static shielding bag is certified to IEST-STD-CC1246E Level 100, and is designed to provide a static safe environment for ESD sensitive electronic devices.

Search
[92AH0111 at newark.com](#)

**65675 Lockout Device, Electrical Plug, Large, PP (Polypropylene), Red, 110V**

Plug lockouts prevent electrical plugs from being inserted into a wall outlet, for use when a plug will not remain under the exclusive control of the person performing service or maintenance

Search
[07C7805 at newark.com](#)

**9205+ BULK Respirator, Disposable, N95, NIOSH, Aura Series**

3M™ Aura™ Particulate Respirator, 9205+, N95. NIOSH approved N95 rating with adjustable nose clip, nose foam and 3-Panel, flat-fold style, stapled headbands that are individually packed in case of 440.

Search
[40AJ6070 at newark.com](#)

**076518 Torque Screwdriver, Adjustable, 0.25", 4 to 40 in-lb, 7"**

SAFEGUARDING AGAINST FASTENING FAILURES. Poka-yoke torque screwdriver prevents over-torque with accuracy and precision delivered for all fastening applications

Search
[14AJ6585 at newark.com](#)

**45-1611 Wire Stripper, Custom Stripmaster™, 14-10 AWG Capacity MIL-W-81044 & 88A081X-Poly X-Wires**

The 45-1611 is a Custom Stripmaster® Wire Stripper for use with MIL-W-81044 and 88A081X-Poly X wires. Contains counterbored hole sized to insulation and inner stripping hole sized to conductor.

Search
[97B3765 at newark.com](#)

**26008 Screwdriver, Slotted, Precision, 0.8 mm Tip, 40 mm Blade, 120 mm Overall**

Exact fit precision machined tip. Wiha exclusive CRM-72 special tool steel. Satin micron vapor chromed finish. Super through hardened blades. Handles proportioned to blade size for optimum torque.

Search
[28C1030 at newark.com](#)

**7SASL Tweezer, Precision, Curve, Pointed, Stainless Steel, 4.5"**

The 7SASL is a 4.5-inch precision point Tweezer with stainless steel body and tip construction. Anti-magnetic and curved for easy manipulation in confined areas

Search
[52F9070 at newark.com](#)

**3C-SA Tweezer, Precision, Straight, Pointed, Stainless Steel, 4.25"**

The 3C-SA is a Fine Tip Tweezers made of anti-magnetic stainless steel. The straight very fine precision pointed tweezers is designed for work under magnification.

Search
[95H8702 at newark.com](#)

**VDV501-853 Network Cable Tester, Remote kit**

These next generation of Scout Pro® data, video and voice cable testers test and locate cable, measure cable length and much more.

Search
[24AJ5229 at newark.com](#)

**TK-185 FTTH PREP KIT, POWER METER**

FTTH prep kit with power meter offers cleaning and preparation products for use on 1.25mm and 2.5mm connector end-faces and bulkhead adapters.

Search
[69AJ5454 at newark.com](#)



HAND TOOLS

HL2020E HEAT GUN, 1.6KW, 620DEG C, 120VAC



Electronically controlled hot air tool HL 2020 E with LCD. Professional technology for shaping tiles, de-soldering circuit boards, welding plastics, drying repair filler, shrinking cable sleeves, soldering pipes and a whole lot more.

Search
[52AC2624 at newark.com](#)

HG-501D Heat Gun, 120 V, 1200jF Max Temp, 1.74 kW, HG Series



Master Appliance HG-501D 1200°F Industrial Heat Gun, 1740 Watts, 120 V, 60 Hz The 14.5 Amp Heavy-Duty Master Heat Gun is ideal for industrial applications, with its high temperature and power ratings up to 1200°F/649°C at 1740-Watt.

Search
[02AH4118 at newark.com](#)

KRAFTFORM XXL Screwdriver Set, 14 Pieces



12-piece all-round screwdriver set. Kraftform Plus handle for pleasant, ergonomic working that prevents blisters and calluses. Hard gripping zones for high working speeds whereas soft zones ensure high torque transfer.

Search
[81X1351 at newark.com](#)

78 61 140 Cutter, XL, Precision, 140 mm, Shear, 2.1 mm, 64 j



For ultra fine cutting work in electronics and fine mechanics. Ground, very sharp cutting edges without bevel. Shear cut with controlled micro cutting edge for the most precise cutting of even the thinnest of wires and for a long service life

Search
[28AH0707 at newark.com](#)

MEH-001 DIGITAL MICROSCOPE, 20X, 160MM



Mantis Elite is an 'eyepiece-less' stereo microscope, a perfect alternative to traditional stereo microscopes, for a wide range of inspection, preparation and manipulation tasks requiring hand-to-eye co-ordination.

Search
[45AC0533 at newark.com](#)

26501-LED-8D Magnifier, LED, 3X, Magnification, 45", Arm Length



The 26501-LED-8D is a ProVue 8-diopter LED Magnifying Lamp with 45-inch adjustable arm length. The ProVue LED 8D workbench lamp reduces eye strain and vision fatigue for high-volume industrial users.

Search
[28Y7449 at newark.com](#)

543-552A Dial Indicator, 25.4 mm Range, 1.8 N Max Force, 0.001 mm Resolution



The 543-552A is an absolute Digimatic Indicator with back-lit LCD screen. The ID-F series indicator features absolute linear encoder technology, once the measurement reference point has been preset it will not be lost when the power is turned on.

Search
[82K1065 at newark.com](#)

Metcal GT90-HP-T4 Soldering Station



Metcal GT Series Soldering System with adjustable temperature ranges from 392 to 842 Degrees Fahrenheit

Search
[82AH9979 at newark.com](#)

Metcal MX-5210 Rework Station



MX-5210 is a dual-port highly effective simultaneous Soldering and Rework System, highly effective for soldering applications including lead-free, high mass components or boards, thermally sensitive components requiring low operating temperature

Search
[48W5011 at newark.com](#)

Metcal DX-250 Fluid Dispenser



DX-250 is a high performance digital dispenser for low, medium and high viscosity fluids accurately and consistently.

Search
[39M4552 at newark.com](#)

Weller WE1010NA Soldering Station



Digital 70 W WE soldering station is 40% more powerful than the WES / WESD station. This allows the iron to heat up faster and to provide a faster recovery time - gets the job done quicker with more efficiency and precision

Search
[45AC9886 at newark.com](#)

Weller W100PG Soldering Iron



W100PG is a heavy duty Soldering Iron with CT6F7 tip, 100W output power, 120V supply voltage, closed loop method of controlling maximum tip temperature, portable line voltage iron no base station required

Search
[33F349 at newark.com](#)

DS017LS DESOLDERING GUN, ANTISTATIC



Designed for heavy duty, high volume applications. Easy one-hand loading and operation. Integral cleaning shaft self-cleans no-stick PTFE tip

Search
[69C0028 at newark.com](#)

Superwick Desoldering Braid



400-NS series No-Clean Super Wick are high quality, precision cleaned desoldering braids that were produced with up-to-date and environmentally friendly processes and technology

Search
[84AC8115 at newark.com](#)

951SX LONER® Temperature Controlled Soldering Station



Solder Station with power supply, SR298 soldering iron, LT375 tip, iron-holding pod, tip tray and sponge, 70 watts.

Search
[92F8585 at newark.com](#)

EML200F Contact Cleaner Lubricant

ELECTROLUBE
THE SOLUTIONS PEOPLE



EML is a solvent/lubricant blend designed to remove surface contamination and oxidation from all metallic contact surfaces. Use of the product reduces electrical resistance across the switch or connector by increasing the surface area of the contact.

Search
[57AC5795 at newark.com](#)

Electronic Cleaning Solvent Plus

ELECTROLUBE
THE SOLUTIONS PEOPLE



ECSP is an extremely fast-drying solvent specially formulated for the quick and efficient cleaning of electrical equipment.

Search
[49AH7284 at newark.com](#)

Deoxit Gold GN5 Contact Cleaner

GAIG
LABORATORIES, INC.



Unique contact cleaner, conditioner, enhancer, lubricant and protectant for PLATED metal surfaces. Improves conductivity, maintains optimum signal quality, reduces fretting & dendrite corrosion, and stabilizes connections between similar and dissimilar metals.

Search
[42J5221 at newark.com](#)

70/30 IPA Cleaning Spray - 475ml

MG Chemicals
ONE COMPANY... MANY SOLUTIONS



The liquid is fully miscible with water and a large variety of organic solvents, making it good at dissolving dirt, dust, greases, and light organic contaminants.

Search
[68AH0507 at newark.com](#)

CTS-R12 Konform® SR Conformal Coating

Chemtronics



Transparent coating provides ideal protection for both rigid and flexible printed circuit boards.

Search
[00Z1201 at newark.com](#)

Techspray 1630-16S G3 Blue Shower 16oz

TECHSPRAY



The 1630-16S is a G3 blue Shower Cleaner/Degreaser, patented non-flammable cleaner formulated to be powerful, yet economical

Search
[81C8423 at newark.com](#)

HFFR - Hexane-Free Flux Remover

ELECTROLUBE
THE SOLUTIONS PEOPLE



HFFR is a fast-drying, n-hexane free solvent cleaner specially formulated for the quick and efficient removal of flux residues present after soldering. Designed to eliminate the use of ozone depleting solvents such as CFC 113 and hazardous materials such as n-Hexane

Search
[57AC5812 at newark.com](#)

Tech Spray Ultra Pure Duster 15oz

TECHSPRAY



Techspray air dusters blow away dust, microscopic contaminants, ink, metallic oxide deposits and other soils that can damage sensitive electronics.

Search
[00Z1981 at newark.com](#)

Ultimaker S3 Dual Extrusion 3D Printer

Ultimaker



S3 dual-extrusion 3D printer delivers high-quality, composites-capable performance in a smaller printer format. Ultimaker S3 brings all the great features of the Ultimaker S5, such as compatibility with all swappable Ultimaker Print Cores

Search
[39AH7236 at newark.com](#)

PLA Black 3D Printer Filament 2.85mm 750g

Ultimaker



Ultimaker PLA filament provides a no-hassle 3D printing experience thanks to its reliability and good surface quality.

Search
[72Y2594 at newark.com](#)

NYLON Black 3D Printer Filament 2.85mm

Ultimaker



Used by many manufacturers worldwide, Nylon is well known for its impressive durability, high strength-to-weight ratio, flexibility, low friction, and corrosion resistance.

Search
[98Y0253 at newark.com](#)

PVA Natural 3D Printer Filament 2.85mm

Ultimaker



PVA (polyvinyl alcohol) is a water soluble support material for multi-extrusion 3D printing. With a good thermal stability this PVA provides good adhesion to Ultimaker PLA, Tough PLA, Nylon, and CPE

Search
[31AC4946 at newark.com](#)

4K 2-PORT KVM SWITCH WITH USB-C

BLACK BOX



The 4K 2-Port KVM Switch with USB-C, DisplayPort allows two USB-C enabled computers to share multiple USB peripherals

Search
[98AC6099 at newark.com](#)

POE Media Converter

BLACK BOX



10/100/1000-Mbps Copper to 1000-Mbps Singlemode Fiber, Connect Gigabit-speed fiber optic to a 10-/100-/1000-Mbps copper UTP segment while also powering 802.3af devices

Search
[31AJ3335 at newark.com](#)

Gigabit POE Extender, 2 port

BLACK BOX



Extends both Gigabit Ethernet and PoE up to 600 meters

Search
[33AH5887 at newark.com](#)



MicroHAWK F430/ V430 industrial smart camera and image-based barcode reader

Learn how the MicroHAWK F430/ V430 by Omron can help you:

- Conduct inspection, code reading, and character reading simultaneously
- Simplify multiple-device inspection systems with a single camera
- Inspect multiple parts that vary in size, without changing the camera position
- Ease of integration with compact footprint and simplified machine vision software
- Maintain a complete audit trail to meet regulatory requirements



Model ii910 Industrial Sonic Imager



Quickly and accurately locate air, gas and vacuum leaks in compressed air systems even in noisy environments.



Search
[92AH2695 at newark.com](#)

Model VS290-21 Borescope/Thermal Imager



Quickly and safely find hidden dangers in difficult-to-access locations. See and measure invisible hot spots before catastrophic equipment failures can occur.



Search
[24AK2014 at newark.com](#)

Model VS290-33 Borescope/Thermal Imager



Quickly and safely find hidden dangers in difficult-to-access locations. See and measure invisible hot spots before catastrophic equipment failures can occur.



Search
[24AK2015 at newark.com](#)

Model VS290-32 Borescope/Thermal Imager



Quickly and safely find hidden dangers in difficult-to-access locations. See and measure invisible hot spots before catastrophic equipment failures can occur.



Search
[92AH2158 at newark.com](#)

VSC-IR32 Thermal Camera Probe



Replacement probe camera for VS290 Thermal Imager has an 11mm rectangular tip and provides side view



Search
[53AJ8097 at newark.com](#)

VSC-IR33 Thermal Camera Probe



Replacement probe camera for VS290 Thermal Imager has an 19mm round tip and provides side view



Search
[24AK2013 at newark.com](#)

VSC-IR21 Thermal Camera Probe



Replacement probe camera for VS290 Thermal Imager has an 19mm round tip and provides forward view



Search
[24AK2012 at newark.com](#)

Model C3-X Pocket Thermal Imager with WiFi



Professional inspection tool for building, facilities maintenance, HVAC/R, electrical repair and other troubleshooting applications. 3.5" touchscreen display with 128x96 thermal imager.



Search
[02AJ9921 at newark.com](#)

Model TG297 Thermal Imager



Combines accurate measurement with the ability to image temperatures as high as 1886°F. 160x120 IR resolution



Search
[40AH1831 at newark.com](#)

Model TG165-X Thermal Imager



Visually pinpoint the source of electrical, mechanical, and HVAC/R system faults. Measure temperatures as high as 572°F. 80x60 IR resolution.



Search
[77AH1224 at newark.com](#)

Fluke-805 FC Vibration Meter



Make go or no-go maintenance decisions with confidence. Reliable vibration screening device helps mechanical troubleshooting teams that need repeatable, severity-scaled readings of overall vibration and bearing condition.



Search
[47X3304 at newark.com](#)

Fluke-3561/3502 Vibration Meter Kit



Vibration Sensor makes predictive maintenance fast and scalable. Kit includes four wireless sensors and WiFi link for remote monitoring of multiple points in a system.



Search
[69AC4982 at newark.com](#)

Fluke 376FC Clamp with 36" iFLEX Probe



The iFlex™ flexible current probe allows easy connections to wires in tight spaces. Measures up to 1,000A DC, 2,500A AC., using the iFlex clamp.



Search
[15AJ6661 at newark.com](#)

Fluke 835 Laser Belt Alignment Tool



Rugged device utilizes reflected laser technology to enable quick, simple and complete pulley alignment.



Search
[71AJ7052 at newark.com](#)

T6-1000 Ammeter with Non Contact Voltage Measurement



The T6 electrical tester with FieldSense technology measure voltage up to 1000VAC through the open fork, without test lead contact, opening covers or removing wire nuts.



Search
[34AC9867 at newark.com](#)

MODULAR TEST SYSTEMS

16 Channel USB Bus Powered Temperature DAQ



Compact Data Acquisition (DAQ) bundle is fully self contained and records up to 16 thermocouple inputs simultaneously



Search
[71AJ8515 at newark.com](#)

32 Channel USB Bus Powered Voltage DAQ



Compact Data Acquisition (DAQ) bundle is fully self contained and records up to 32 single ended voltage inputs simultaneous



Search
[71AJ8511 at newark.com](#)

Four Channel USB Bus Powered Temperature DAQ



Compact Data Acquisition (DAQ) bundle is fully self contained and records up to four thermocouple inputs simultaneously



Search
[71AJ8514 at newark.com](#)

Four Channel USB Bus Powered Vibration Measurement DAQ



Compact Data Acquisition (DAQ) bundle is fully self contained and records up to four IEPE vibration sensors simultaneously



Search
[71AJ8516 at newark.com](#)

Eight Slot DAQ System Chassis for NI Modules



For small, portable sensor measurement systems, this chassis provides plug-and-play simplicity of USB to sensor and electrical measurements.



Search
[14AJ5242 at newark.com](#)

Eight Slot DAQ System Chassis for NI Modules



For small, portable sensor measurement systems, this chassis provides plug-and-play simplicity of USB to sensor and electrical measurements.



Search
[13AJ4147 at newark.com](#)

Test Workflow Software Solution - Download



Test Workflow equips engineers with application-specific tools so that they can choose the right one for the job—from graphical programming environments to no-code and interactive software applications.



Search
[98AJ1160 at newark.com](#)

Test Workflow Software Solution - with Media



Test Workflow equips engineers with application-specific tools so that they can choose the right one for the job—from graphical programming environments to no-code and interactive software applications.



Search
[98AJ1161 at newark.com](#)

Test Workflow-Pro Software Solution - Download



Includes all features of Workflow, plus code validation, deployment capabilities and is recommended for comprehensive analysis and reporting



Search
[98AJ1162 at newark.com](#)

Test Workflow-Pro Software Solution - with Media



Includes all features of Workflow, plus code validation, deployment capabilities and is recommended for comprehensive analysis and reporting



Search
[98AJ1163 at newark.com](#)

N6700C Modular Power System Mainframe



Power supply mainframe accepts up to four Keysight power modules, provides up to 400W output



Search
[04AC9307 at newark.com](#)

N6701C Modular Power System Mainframe



Power supply mainframe accepts up to four Keysight power modules, provides up to 600W output



Search
[04AC9308 at newark.com](#)

N6702C Modular Power System Mainframe



Power supply mainframe accepts up to four Keysight power modules, provides up to 1200W output



Search
[04AC9309 at newark.com](#)

N6774A DC Power Module 300W



Part of the N6700C Family, this plug in module provides up to 35VDC or 8.5A



Search
[60K0563 at newark.com](#)

N6732V DC Power Module 50E



Part of the N6700C Family, this plug in module provides up to 8VDC or 6.25A



Search
[56J9882 at newark.com](#)

For Simple Machines

Improve efficiency with innovation and maintain right balance of cost and functionality

New level of aesthetics in HMI basic range, Harmony ST6

Ranging from 4" to 15", Harmony ST6 is a cost-effective HMI panel that provides best-in-class quality with good graphics and a stylish design. The Harmony ST6 series comprises of two options, Basic HMI (HMIST6) that is powered by EcoStruxure Operator Terminal Expert software, and Basic Web HMI (HMISTW6) that provides a ready to use and platform agnostic Terminal which allows visualization of all devices with a HTML5 Server.



OSCILLOSCOPES

**TBS2072B 2CH, 70MHz
MSO/MDO Oscilloscope**

Tektronix®

**TBS2074B 4CH, 70MHz
MSO/MDO Oscilloscope**

Tektronix®

**TBS2102B 2CH, 100MHz
MSO/MDO Oscilloscope**

Tektronix®

Scope series features a 9" WVGA display, 5M point record length, 2GS/s sample rate and accepts TekVPI interface probes.



Scope series features a 9" WVGA display, 5M point record length, 2GS/s sample rate and accepts TekVPI interface probes.



Scope series features a 9" WVGA display, 5M point record length, 2GS/s sample rate and accepts TekVPI interface probes.



Search
[54AH1530 at newark.com](#)

Search
[54AH1536 at newark.com](#)

Search
[54AH1542 at newark.com](#)

**TBS2104B 4CH, 100MHz
MSO/MDO Oscilloscope**

Tektronix®

**TBS2202B 2CH, 200MHz
MSO/MDO Oscilloscope**

Tektronix®

**TBS2204B 4CH, 200MHz
MSO/MDO Oscilloscope**

Tektronix®

Scope series features a 9" WVGA display, 5M point record length, 2GS/s sample rate and accepts TekVPI interface probes.



Scope series features a 9" WVGA display, 5M point record length, 2GS/s sample rate and accepts TekVPI interface probes.



Scope series features a 9" WVGA display, 5M point record length, 2GS/s sample rate and accepts TekVPI interface probes.



Search
[54AH1548 at newark.com](#)

Search
[54AH1554 at newark.com](#)

Search
[54AH1560 at newark.com](#)

**TBS1052C 2CH, 50MHz DSO
Oscilloscope**

Tektronix®

**TBS1072C 2CH, 70MHz DSO
Oscilloscope**

Tektronix®

**TBS1102C 2CH, 100MHz DSO
Oscilloscope**

Tektronix®

Perfect for educational institutions as well as embedded design engineers. Includes a 7" WVGA color display, up to 1GS/s sample rate and an innovative courseware system that integrates the lab exercises with step-by-step instructions.



Perfect for educational institutions as well as embedded design engineers. Includes a 7" WVGA color display, up to 1GS/s sample rate and an innovative courseware system that integrates the lab exercises with step-by-step instructions.



Perfect for educational institutions as well as embedded design engineers. Includes a 7" WVGA color display, up to 1GS/s sample rate and an innovative courseware system that integrates the lab exercises with step-by-step instructions.



Search
[77AH8527 at newark.com](#)

Search
[77AH8528 at newark.com](#)

Search
[77AH8529 at newark.com](#)

**TBS1202C 2CH, 200MHz
DSO Oscilloscope**

Tektronix®

**Model 1775/BASIC 3-Phase
Power Quality Analyzer**

FLUKE®

**Model 1777 3-Phase Power
Quality Analyzer Kit**

FLUKE®

Perfect for educational institutions as well as embedded design engineers. Includes a 7" WVGA color display, up to 1GS/s sample rate and an innovative courseware system that integrates the lab exercises with step-by-step instructions.



Automatic measurements with more flexibility, automatic measurement capture and better power quality troubleshooting.



Includes the Model 1777 Analyzer with (4) 1,500A, 24" Flex probes, magnet probes and WiFi module



Search
[77AH8530 at newark.com](#)

Search
[71AJ7049 at newark.com](#)

Search
[71AJ7050 at newark.com](#)

**Model 1773 3-Phase Power
Quality Analyzer Kit**

FLUKE®

**Model 1775 3-Phase Power
Quality Analyzer Kit**

FLUKE®

Model C1777 Analyzer Case

FLUKE®

Includes the Model 1773 Analyzer with (4) 1,500A, 24" Flex probes



Includes the Model 1775 Analyzer with (4) 1,500A, 24" Flex probes, magnet probes and WiFi module



Hard case specifically designed to transport and protect Fluke 1770 Series Power Quality Analyzers



Search
[71AJ7046 at newark.com](#)

Search
[71AJ7048 at newark.com](#)

Search
[71AJ7043 at newark.com](#)

Model MDS-550 III Motor Drive Analyzer

FLUKE



Portable unit features a motor-drive analyzer, waveform analyzer and recording data logger all in one. Measures inverter output voltage, DC bus and ripple voltage, harmonics and unbalance.

Search
[70AJ5587 at newark.com](#)

Model 190-104-III ScopeMeter

FLUKE



New Series III portable ScopeMeter provides four isolated input channels and 100MHz bandwidth

Search
[70AJ5592 at newark.com](#)

Model 190-202-III ScopeMeter

FLUKE



New Series III portable ScopeMeter provides two isolated input channels and 200MHz bandwidth

Search
[70AJ5595 at newark.com](#)

Model 190-204-III ScopeMeter

FLUKE



New Series III portable ScopeMeter provides four isolated input channels and 200MHz bandwidth

Search
[70AJ5597 at newark.com](#)

Model 190-504-III ScopeMeter

FLUKE



New Series III portable ScopeMeter provides four isolated input channels and 500MHz bandwidth

Search
[70AJ5601 at newark.com](#)

RTB2002EDU 2CH, 70MHz Oscilloscope

ROHDE & SCHWARZ
Make ideas real



Two channel scope features 10.1" touchscreen display, logic analyzer, protocol analyzer, waveform and pattern generator and digital voltmeter.

Search
[92AH7540 at newark.com](#)

RTB2004EDU 4CH, 70MHz Oscilloscope

ROHDE & SCHWARZ
Make ideas real



Four channel scope features 10.1" touchscreen display, logic analyzer, protocol analyzer, waveform and pattern generator and digital voltmeter.

Search
[92AH7541 at newark.com](#)

RTC1002EDU 2CH, 50MHz Oscilloscope

ROHDE & SCHWARZ
Make ideas real



Two channel scope features 6.5" VGA display with logic analyzer, protocol analyzer, frequency analyzer, pattern generator, function generator, digital voltmeter options included.

Search
[92AH7542 at newark.com](#)

RTM-COM4US 4CH, 1GHz Oscilloscope

ROHDE & SCHWARZ
Make ideas real



Four channel scope features 10.1" touchscreen display, included 16 MSO option, serial triggering and decode, power analysis, Bode plot frequency response analysis and 400M sample memory.

Search
[99AC0521 at newark.com](#)

MSO5B Series Oscilloscope 8CH, 350MHz

Tektronix



Provides benefits of the MSO5 Series predecessor, plus 2x faster waveforms from the function generator, new History Mode, and a separate Aux Trigger Input.

Search
[83AJ0738 at newark.com](#)

MSO5B Series Oscilloscope 8CH, 500MHz

Tektronix



Provides benefits of the MSO5 Series predecessor, plus 2x faster waveforms from the function generator, new History Mode, and a separate Aux Trigger Input.

Search
[83AJ0739 at newark.com](#)

MSO5B Series Oscilloscope 8CH, 1GHz

Tektronix



Provides benefits of the MSO5 Series predecessor, plus 2x faster waveforms from the function generator, new History Mode, and a separate Aux Trigger Input.

Search
[83AJ0736 at newark.com](#)

MSO5B Series Oscilloscope 8CH, 2GHz

Tektronix



Provides benefits of the MSO5 Series predecessor, plus 2x faster waveforms from the function generator, new History Mode, and a separate Aux Trigger Input.

Search
[83AJ0737 at newark.com](#)

MSO5B Series Oscilloscope 4CH, 1GHz

Tektronix



Provides benefits of the MSO5 Series predecessor, plus 2x faster waveforms from the function generator, new History Mode, and a separate Aux Trigger Input.

Search
[83AJ0728 at newark.com](#)

MSO5B Series Oscilloscope 4CH, 2GHz

Tektronix



Provides benefits of the MSO5 Series predecessor, plus 2x faster waveforms from the function generator, new History Mode, and a separate Aux Trigger Input.

Search
[83AJ0729 at newark.com](#)



Capacitors for Power Electronics



Advanced Capacitor Technology

Aluminum Electrolytic

AC Film

DC Film

RF Mica

Supercapacitors



ENERGIZING IDEAS

**CORNELL
DUBILIER**

www.cde.com

TT Electronics Ultra Low Profile Power Resistors



The WDBR range of thick film planar power resistors on steel, offers high pulse withstand capability and a compact footprint with low profile, to many demanding applications.



Search
[71P4644 at newark.com](#)

TT Electronics' Surface Mount Sense Resistors



OAR & OAR-XP resistors give designers stable and accurate sensing of AC and DC currents in a compact SMD format, whilst elevating the hotspot off the PCB.



Search
[55M7104 at newark.com](#)

Metallized Polypropylene Film Capacitors



Type 953B AC rated, radial leaded box, UL 810 fail safe, rated 10,000 AFC



Search
[68AC5670 at newark.com](#)

IHLP2525 - 8A Series - Automotive grade, 180C capability



The Automotive Grade IHLP low profile, high current inductors will save space in under the hood automotive applications with continuous high operating temperature to +180°C.



Search
[40Y8573 at newark.com](#)

MCEK1210 High Current Inductors



High current low-profile power inductors



Search
[77AH1006 at newark.com](#)

C4AK Film Capacitors



Automotive grade devices meet the demanding Automotive Electronics Council's AEC-Q200 qualification requirements with longer life at 125°C (higher voltage derated) and 135°C.

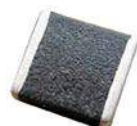


Search
[50AJ2978 at newark.com](#)

TransGuard Multilayer Varistors



The Glass Encapsulated TransGuard® multilayer varistors are zinc oxide (ZnO) based ceramic semiconductor devices with non-linear, bi-directional V-I characteristics.



Search
[22AJ1952 at newark.com](#)

NANO2® 456SDE Fast Acting SMD Fuse



The 456SDE Series NANO2® fuse is a small sized, surface-mountable high current fuse which provides over-current and excessive surge current protection for applications operating at high current in a limited space.



Search
[57AJ9062 at newark.com](#)

Low Resistance SMD PTC Fuses



PTSLR1206 series SMD PTC fuses. Current rating from 0.75 to 5.00A.



Search
[71AJ7786 at newark.com](#)

Metal Foil Current Sensing Resistors



High Temperature Type up to 175°C, 22m ohm, 0.75W for 1206 size, +/-1% tolerance, +/-50ppm TCR. Face down mounting and superb heat dissipation.

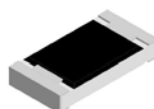


Search
[KRL1632E-C-R022-F-T5 at newark.com](#)

Precision Thin Film Chip Resistors



Precision, reliable chip resistor with high resistance. 1M ohm for 0805 size. +/-0.1% tolerance, +/-25ppm TCR. Highly reliable, Biased life test 10,000 hrs, less than 0.1% drift.



Search
[RG2012P-105-B-T5 at newark.com](#)

Type ALH, AC Filter Capacitors for Harsh Environments



Designed for harsh environments, the ALH series of AC-rated filter capacitors offer 50% greater life than competitive 85/85 THB-rated film capacitors



Search
[58AJ7920 at newark.com](#)

Tight Tolerance Precision Current Sense Resistors



Tolerance down to 0.5% and TCR vales down to 100ppm. Sizes range from 0201 up to 1206.



Search
[29AH2742 at newark.com](#)

LST Series Metal Oxide Varistors



SPD Thermally Protected Varistor. he built-in thermal disconnecting function and electric arc shield provides additional protection to prevent catastrophic failure and fire hazard even under the extreme circumstances



Search
[25AJ3861 at newark.com](#)

Internal Wifi Antenna



- 2400~2483.5MHz/4900~5825MHz.
- Dual band Frequency
- Customizable cable length and type
- Rigid PCB Type
- RoHS compliant"



Search
[28AJ0389 at newark.com](#)

PVS-032-1100-BLK Heat Shrink Tubing, 100ft.

multicomp^{PRO}

This heat shrink tubing is a black standard wall Heat Shrink Tubing made of PVC and offers 2:1 shrink ratio, 0.5" inner diameter, 100°C Minimum recommended shrink temperature, black in color. Available in various sizes and colors.

Search
[03F3482 at newark.com](#)



SPC5087 Heat Shrink Tubing, 1 ft. , with EMI Shielding, 3ft., 0.25" inner diameter.

multicomp^{PRO}

This product is comprised of MIL-I-23053/5 polyolefin heat-shrink tubing and an EMI shielding fabric woven of nickel-over-copper-plated polyester taffeta cloth which provides outstanding shielding performance.

Search
[50N162 at newark.com](#)



MC001771 Heat Shrink Tubing, Flame Retardant, Pack of 24.

multicomp^{PRO}

A 24 pack of 6" long tubing with an inner diameter of 0.217 ". The shrink ratio is 2:1 and color is black. They are available in various sizes.

Search
[18AC1037 at newark.com](#)



SPC12216 Fray Resistant Expandable Sleeve, 50ft.

multicomp^{PRO}

This Expandable Sleeve is for use with cable and wire, 50ft spool length, 1.25 inner diameter. It can be cut with ordinary scissors, eliminates the need for hot-knife cutting. Self-extinguishing when used to encase typical non-flammable wires or cables.

Search
[06H1240 at newark.com](#)



SPC12219 Fray Resistant Expandable Sleeve, 25ft.

multicomp^{PRO}

This Expandable Sleeve is for use with cable and wire, 25ft spool length, 3.5" inner diameter. It can be cut with ordinary scissors, eliminates the need for hot-knife cutting. Self-extinguishing when used to encase typical non-flammable wires or cables.

Search
[06H1243 at newark.com](#)



PVI-040-1100-BLK Insulated PVC Sleeve, 100ft., black

multicomp^{PRO}

This sleeve is used for insulating cable and wire., 0.625 inner diameter, 1.32 Specific gravity, and 1.32 Specific gravity.

Search
[03F3657 at newark.com](#)



MP700435 Anti-Static Bag, 2" X 3", Open Top

multicomp^{PRO}

This static shielding bag is suitable for packing electronic products which are sensitive to static. Our static shielding bag consists of a static dissipative polyester outer layer and a static dissipative polyethylene inner layer with a center metallized shield layer.

Search
[67AH8619 at newark.com](#)



MP002748 MP M12 Push-Pull Connectors, Panel Mount Receptacle, 4 Contacts, Solder Pin

multicomp^{PRO}

The MP M12 Push-Pull Connectors are a range of Chrome plated Brass connectors that are both solid enough to be used within tough environments whilst also being aesthetically pleasing.

Search
[64AH1734 at newark.com](#)



MP002474 MP Sealed D-Sub Connectors, 9 Contacts, DE, Solder Cup

multicomp^{PRO}

The MP Sealed D-Sub series of connectors are environmentally sealed to IP67 or IP68 and are ruggedised for use in demanding applications.

Search
[64AH1332 at newark.com](#)



MP002431 MP USB Sealed Metal Connectors USB Sealed Connector, USB Type A, USB 3.0, Receptacle

multicomp^{PRO}

The MP USB Sealed Metal range of connectors and Adaptors are solidly built and designed for demanding applications. Environmentally sealed to IP68

Search
[64AH1289 at newark.com](#)



MP002471 MP HDMI Sealed Metal Connectors, HDMI Receptacle to HDMI Plug

multicomp^{PRO}

The MP Metal Sealed HDMI series of connectors are solidly built metal connectors designed for demanding applications. Environmentally Sealed to IP68.

Search
[64AH1329 at newark.com](#)



MP002488 MP M6 Snap-In Connectors, Circular Connector, Panel Mount Plug, 6 Contacts

multicomp^{PRO}

The MP M6 Snap-In series are a miniature range of connectors with a size of just 8.5mm in diameter, Fits 6.1mm cut-out, Solder or pre-wired termination, IP65 rated

Search
[64AH1565 at newark.com](#)



MP002505 MP Hybrid Connectors, Circular Connector, Panel Mount Receptacle, 4 Contacts, Solder Socket

multicomp^{PRO}

The MP Hybrid series offer a unique opportunity for both power and signal connections to be made within a single housing providing an ideal solution for when panel space is limited.

Search
[64AH1571 at newark.com](#)



MP002534 Circular Connector, MP-T13 IP68 Series, Panel Mount Receptacle, 2 Contacts, Solder Pin, Threaded

multicomp^{PRO}

The MP-T13 IP68 series are a robust range of connectors incorporating threaded couplings and weather sealing to IP68 all within a small housing.

Search
[64AH1593 at newark.com](#)



MP002553 Circular Connector, MP-T21 IP68 Series, Cable Mount Plug, 5 Contacts, Screw Pin, Threaded.

multicomp^{PRO}

The MP-T21 IP68 series is a robust range of connectors incorporating threaded couplings and weather sealing to IP68.

Search
[64AH1368 at newark.com](#)



Eaton® can help your building go green



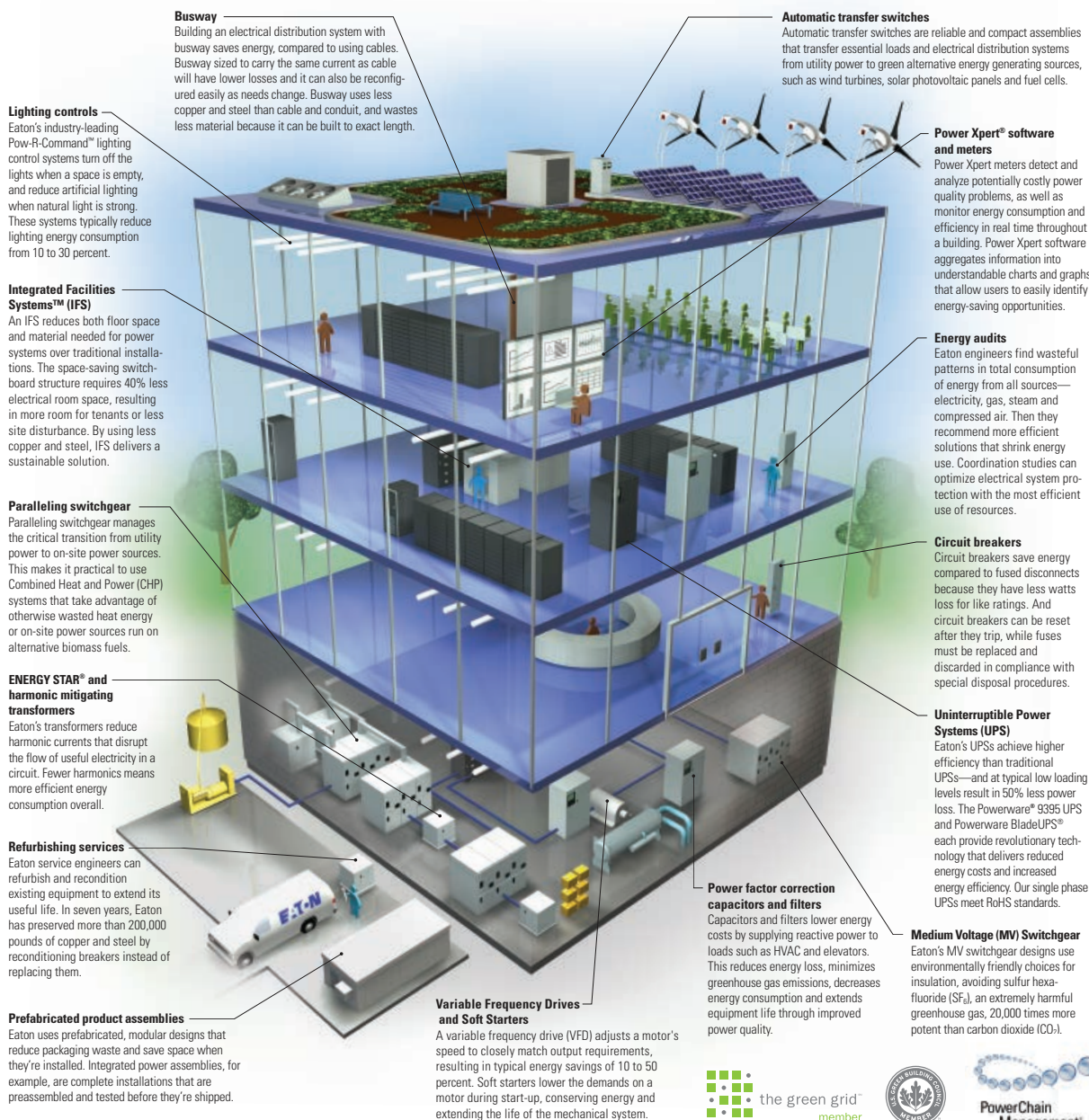
Going green—using natural resources wisely while reducing the impact of human activity on the environment—means more than just being environmentally responsible. It's good business, too.

Buildings play a key role in our impact on the environment. According to the U.S. Green Building Council (USGBC®), building operations account for 65 percent of the electrical

energy used in the United States, which can really affect your bottom line.

Take a look at some ways Eaton's PowerChain Management® portfolio of Cutler-Hammer® and Powerware® products, services and information management tools can help your building go green. Any of these solutions may help buildings qualify for LEED® credits through the USGBC.

The Eaton difference: Inside the green building



Eaton: A bigger impact on the marketplace, a smaller footprint on the world

Eaton believes that companies everywhere must answer the same question over the next decade: How can we sustain our growth, both profitably and responsibly? And we believe tomorrow's leaders will be the companies that master sustainable growth.

Eaton's commitment to sustainability is longstanding. We are a member of the U.S. Green Building Council, the Green Grid and the Green Suppliers Network, and we participate in the international Carbon Disclosure Project (CDP). As a member of the Business Roundtable's Climate RESOLVE initiative, we have pledged

to reduce our greenhouse gas emissions intensity by 18 percent (adjusted for sales) by 2012. And, we published our first public sustainability report sharing our progress toward our sustainability goals in 2006.

Our operations put our beliefs about sustainability into practice. In 2007, we will begin measuring the performance of all of our facilities against our Global Management System of Environment, Safety, Security and Health (MESH), a unified system for managing our environmental, safety and health initiatives across the globe. We pursue a wide

range of initiatives to improve our efficiency, conserve resources and protect the health and safety of our employees. And we're achieving results. Our new plant in Shandong province, China, has been praised as a model of environmentally conscious development. An energy conservation program at our truck transmission plant in San Luis Potosi, Mexico, reduced energy consumption by 40 percent. Over the past two years, our valve manufacturing plant in Searcy, Arkansas, has shrunk its generated waste by 70 percent. And we strive to help our customers go green. Our automobile engine superchargers help

automakers use smaller, cleaner engines that deliver the horsepower consumers crave, plus the fuel efficiency they desire. Our Hybrid Power Systems boost fuel economy and reduce emissions in trucks and buses.

Eaton can help you operate a building in ways that are both smart and sustainable. To learn more, visit www.eaton.com/greenbuildings.

Eaton, Cutler-Hammer, Powerware, PowerChain Management, Pow-R-Command, Integrated Facilities Systems, Power Xpert, and Powerware BladeUPS are trademarks of Eaton Corporation or its subsidiaries and affiliates. All other trademarks are the property of their respective owners.

© 2007 Eaton Corporation. All rights reserved. Printed in USA. Form No. P10832400AE November 2007

MCU0603R103KCT SMD Multilayer Ceramic Capacitor, 10000 pF, 50 V, 0603 [1608 Metric]

MLCC consists of a conducting material and electrodes. To manufacture a chip-type SMT and achieve miniaturization, high density and high efficiency, ceramic condensers are used.

multicomp^{PRO}



Search
[38K9278 at newark.com](#)

MPMLR50V104KX7RTB5 Ceramic Multilayer Capacitor, 0.1uF, 50V, Tolerance 10%, X7R, 5.08mm Pitch

Our Radial Leaded, Epoxy dipped Multilayer Ceramic Capacitors are built by Superior moisture and shock resistant epoxy coating can be supplied in bulk or taped & reel Package for automatic insertion in PCB.

multicomp^{PRO}



Search
[68AH8540 at newark.com](#)

MPCC100V104KY5U Ceramic Disc Capacitor, 0.1uF, 100V, 10%, Y5U

Ceramic Disc Capacitor is radial lead, 10% capacitance tolerance, 5mm lead spacing and 85°C operating temperature

multicomp^{PRO}



Search
[67AH5571 at newark.com](#)

MCESL35V107M6.3X7.7 SMD Aluminum Electrolytic Capacitor, 100 uF, 35 V, 1000 hours @ 85°C, Polar

The capacitors are designed for surface mounting on high density PC boards. Supplied with carrier taping for automatic mounting machine and guaranteed 2,000 hours at 85°C

multicomp^{PRO}



Search
[39T1387 at newark.com](#)

MP000266 SMD Chip Resistor, 6.8 ohms, 5%, 1.5W

Thick Film SMD resistors in a 2512 [6432 Metric] case, 500V, and AEC-Q200 Automotive Qualification Standard

multicomp^{PRO}



Search
[41AH9848 at newark.com](#)

MCCSM12FTDTR033 SMD Current Sense Resistor, 0.033Ohms, 1W

Metal Foil SMD resistor in a 2512 [6432 Metric] case, 1% resistor tolerance. Designed for current sense circuits in power electronic systems

multicomp^{PRO}



Search
[72W2087 at newark.com](#)

MP006115 Metal Oxide Axial Lead, 4.7Ohm, 10W

Metal Oxide Resistor with a 5% tolerance, operating temperature to +155°C, and 500V max working voltage.

multicomp^{PRO}



Search
[17AJ6198 at newark.com](#)

MCF 0.25W 0R Zero Ohm SMD Resistor

Carbon Film Zero Ohm Resistor, axial lead jumper, rated at 250mW and 250V max working voltage.

multicomp^{PRO}



Search
[38K0323 at newark.com](#)

MP740137 4-in-1 Soldering Rework Station

This rework station, includes functionality for soldering, hot air, desoldering and electronic tweezers. Soldering station is 130W to 500°C, desoldering is 150W to 500°C, and hot air has 50W heating component/25W air pump to 500°C

multicomp^{PRO}



Search
[72AC8885 at newark.com](#)

MP740139 80W Soldering Station

This is a 80W digital soldering station heats up fast and provide a fast recovery time. ESD safe with a clear and intuitive LCD display for easy use. It has a temperature up to 450°C and comes with Cleansing Sponge, Soldering Iron & Stand

multicomp^{PRO}



Search
[39AH0164 at newark.com](#)

MP740686 US 65W Soldering Station

This is a 65W economical soldering station with LCD display screen making easy control visualization. MCU controlled temperature of soldering iron can be easily adjusted with high precision.

multicomp^{PRO}



Search
[24AJ5701 at newark.com](#)

MP740757 40W Soldering Iron

This is a 40W soldering iron with a US AC 115V plug and heats up to 480 °C

multicomp^{PRO}



Search
[26AJ4714 at newark.com](#)

MP740758 15W Soldering Iron

This is a 15W soldering iron with a US AC 115V plug and heats up to 350 °C

multicomp^{PRO}



Search
[26AJ4715 at newark.com](#)

MP740765 200W Soldering Iron

This is a 200W soldering iron with a US AC 115V plug and heats up to 550 °C. It is a heavy duty switched soldering iron with Chisel point tip, mini stand and plastic handle.

multicomp^{PRO}



Search
[26AJ4722 at newark.com](#)

MP740415 US Desoldering Station

This is a 90W desoldering station with a switchable source 220V or 115V with a US plug. The heating temperature is 480°C and comes with stand, desoldering gun and three desoldering tips.

multicomp^{PRO}



Search
[26AJ4706 at newark.com](#)

MP750510 US 35MHz, 2 CH, Arbitrary Waveform Generator with TFT LCD Screen

This AWG has 6 basic waveforms and 152 built-in arbitrary waveforms with modulation functions: AM, FM, PM, FSK, 3FSK, 4FSK, PSK, OSK, ASK, DSB-AM, QPSK, SUM, BPSK, PWM, Sweep and Burst etc

Search
[53AJ6162 at newark.com](#)

multicomp^{PRO}

MP750511 US 60MHz, 2 CH Arbitrary Waveform Generator, with TFT LCD Screen

This AWG has 6 basic waveforms and 152 built-in arbitrary waveforms with modulation functions: AM, FM, PM, FSK, 3FSK, 4FSK, PSK, OSK, ASK, DSB-AM, QPSK, SUM, BPSK, PWM, Sweep and Burst etc

Search
[53AJ6163 at newark.com](#)

multicomp^{PRO}

MP750666 US 25MHz, 2 CH, Arbitrary Function Generator with 4.3" TFT LCD display

This AFG has a 6 digit high precision frequency meter compatible with TTL level signal and has sine, square, ramp, pulse, noise, DC, arbitrary waveforms and AM, FM, PM, ASK, FSK, PSK, PWM modulations.

Search
[92AH3442 at newark.com](#)

multicomp^{PRO}

MP750667 US 5MHz, 1 CH, Arbitrary Function Generator with 4.3" TFT LCD display

This AFG has a 6 digit high precision frequency meter compatible with TTL level signal and has sine, square, ramp, pulse, noise, DC, arbitrary waveforms and AM, FM, PM, ASK, FSK, PSK, PWM modulations.

Search
[92AH3443 at newark.com](#)

multicomp^{PRO}

MP720105 US 200MHz, 2+1 CH Digital Oscilloscope

This DSO featuring 1GS/s sampling rates, 8-bits vertical resolution, an 8" color LCD screen, and decoding kit (RS232, SPI, I2C, CAN trigger/decode), and supports Edge, Video, Pulse, Slope, Runt, Windows

Search
[74AH3012 at newark.com](#)

multicomp^{PRO}

MP720107 US 300MHz, 2+1 CH Digital Oscilloscope

This DSO featuring 1GS/s sampling rates, 8-bits vertical resolution, an 8" color LCD screen, and decoding kit (RS232, SPI, I2C, CAN trigger/decode), and supports Edge, Video, Pulse, Slope, Runt, Windows

Search
[74AH3014 at newark.com](#)

multicomp^{PRO}

MP710082 US Single Output, Adjustable 80W Power Supply

This small 80W auto ranging laboratory power supply has a 0.5V to 36V and 0 to 5A output.

Search
[42AH0481 at newark.com](#)

multicomp^{PRO}

MP710087 US Single Output, Adjustable 180W Power Supply

This 180W linear benchtop DC power supply with outputs of 0-60V / 0-3A x 1CH and has a 3.7" TFT LCD display

Search
[42AH0484 at newark.com](#)

multicomp^{PRO}

MP710254 Single Output, Adjustable Switch Mode Power Supply

This a 90W switching DC power supply with outputs 0-30V and 0-3A.

Search
[79X4273 at newark.com](#)

multicomp^{PRO}

MP730624 Digital Multimeter with Bluetooth, 1kV, 20A, 20000 Count, True RMS

This DMM measures AC/DC Current, AC/DC Voltage, Capacitance, Duty Cycle, Frequency, Resistance, Temperature

Search
[93AH0320 at newark.com](#)

multicomp^{PRO}

MP730651 Digital Multimeter, 1kV, 10A, 6000 Count, True RMS

This DMM measures AC/DC voltage/current, resistance, diode, continuity, capacitance, frequency and duty ratio.

Search
[90AH9782 at newark.com](#)

multicomp^{PRO}

MP730657 Digital Multimeter with Datalogging, True RMS, 1kV, 10A, 60000 Count

This DMM can be used to measure the parameters such as AC voltage and DC voltage, AC and DC current, resistance, conductance, diode, continuity, capacitance, temperature and pulse width.

Search
[90AH9786 at newark.com](#)

multicomp^{PRO}

MP760605 Digital Clamp Meter, 400A, 600V, True RMS

This clamp meter has a 6000 count display and measures AC Current, AC/DC Voltage, Continuity, Diode, Resistance, Capacitance, Temperature and Frequency.

Search
[13AJ0603 at newark.com](#)

multicomp^{PRO}

MP760607 Digital Clamp Meter, 400A, 600V, True RMS, 28mm jaw opening, 28mm jaw opening

This clamp meter has a 6000 count display and measures AC and DC Current, AC/DC Voltage, Continuity, Diode, Resistance, Capacitance, Temperature and Frequency.

Search
[13AJ0605 at newark.com](#)

multicomp^{PRO}

MP780002 Temperature Calibrator with 6-digit display

This Calibrator can provide voltage, resistance, 10 kinds of the thermocouple and 4 kinds of

Search
[07AH2546 at newark.com](#)

multicomp^{PRO}


The Newark Custom Shop



Find your custom solution

- Newark can customize thousands of products and components
- They're made-to-order and delivered to your door
- It's simple. Just call us at 1.800.463.9275 and say you need a custom component or product
- Request your FREE quote today

Our Custom Shop offers customization for a variety of products and categories

Raspberry Pi

Create custom versions of Raspberry Pi's for mass production purposes.

Connector modifications

Modify connectors to obtain a variation best suited to your application.

Switches

Customize SVR or NGR rocker switches with logos, dials, and more.

Calibration service

Choose from multiple NIST traceable certificate options.

Kitting

Each kit is labeled and kitted to your specifications.

Enclosures

Standard modification or complete customization of electronic enclosures.

Re-reeling

We re-reel for cut tape orders that are longer than 18".

Stockroom solutions

Lower your inventory levels, reduce your vendor base, and consolidate your spend with Newark Inventory Management

Panel meters

Customize dials with colors, logos, and nonstandard ranges and input signals.

Cable services

Cable assemblies or custom cut cable built to your specifications.

Battery packs

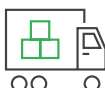
Customize battery pack assemblies for your project needs.

Components

Customize components tailored to your needs through our global sourcing services.



Customize products
& Components



Fast delivery



Free quote

newark.com/custom-shop
1.800.463.9275

