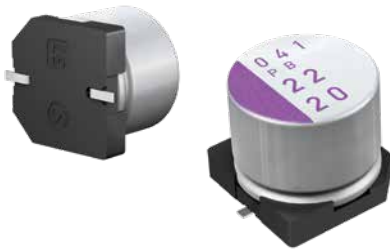


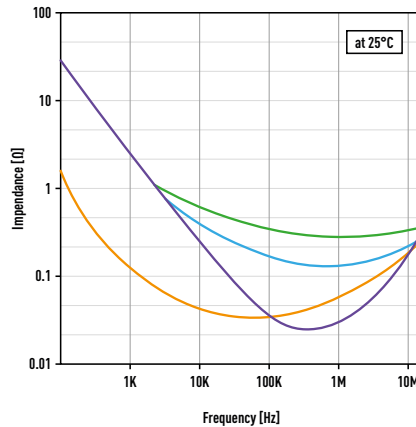
OS-CON Conductive Polymer Aluminum Solid Capacitor

OS-CON Will Revolutionize Your Design! Panasonic offers expanded voltage and temperature range in Solid Polymer Capacitors realizing the lowest ESR and highest ripple current in class



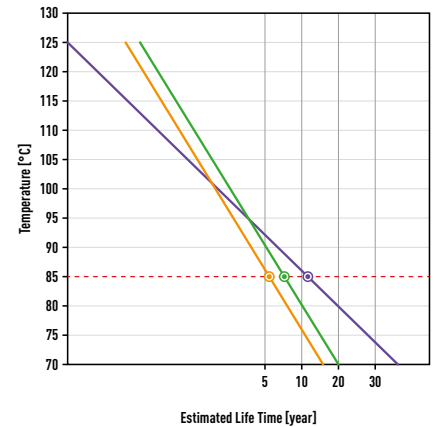
- Voltage range** 2 to 100 VDC
- Capacitance range** 3.3 to 2700 μF
- Temperature range** -55°C/+105°C, -55°C/+125°C
- Lifetime** 5000h@105°C (20°C/10 x longer)
- ESR** Down to 5m Ω
- Ripple current** up to 7200mArms

LOW IMPEDANCE AND ESR



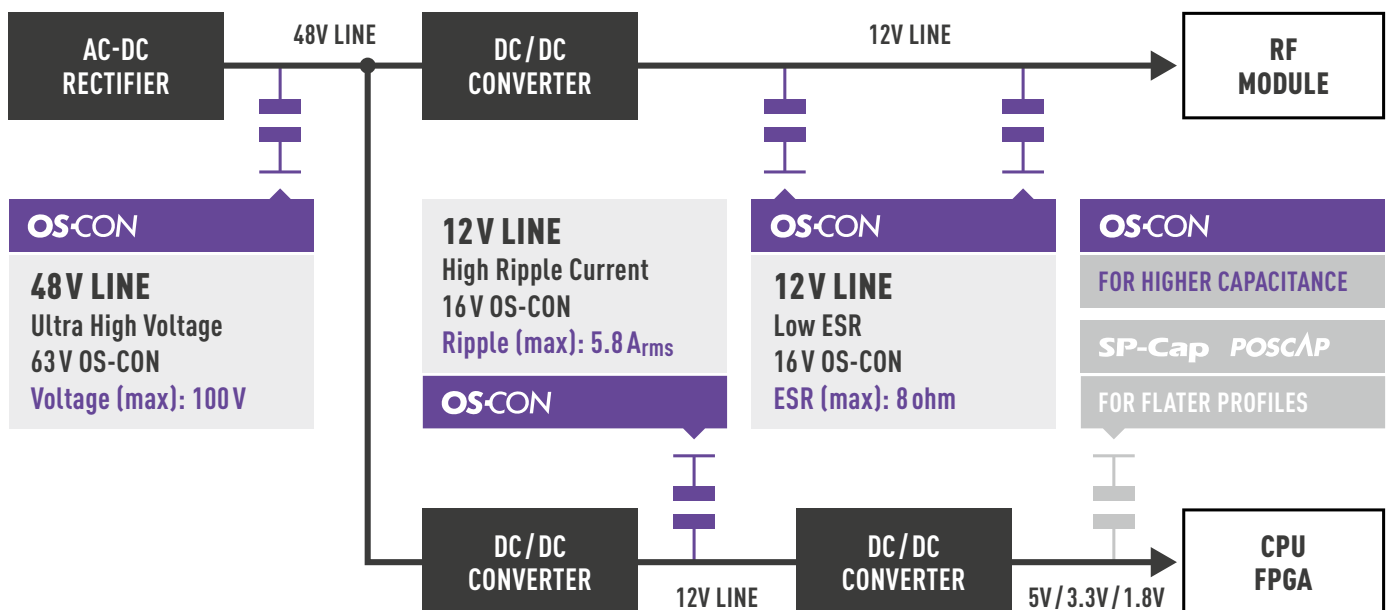
- OS-CON 16V/56 μF ($\phi 8 \times 6.9 \text{ L: } 347 \text{ mm}^3$)
- Electrolytic Capacitor (Low Impedance) 16V/47 μF ($\phi 6.3 \times 7 \text{ L: } 218 \text{ mm}^3$)
- TA-Cap 16V/47 μF ($\phi 6.3 \times 11 \text{ L: } 311 \text{ mm}^3$)
- Electrolytic Capacitor (Low Impedance) 16V/1,000 μF ($\phi 16 \times 25 \text{ L: } 5,024 \text{ mm}^3$)

LONG LIFETIME



- OS-CON 125C x 1,000 hrs / 11.4 years (at 85°C)
- Hybrid 125C x 4,000 hrs / 7.3 years (at 85°C)
- Electrolytic Capacitor 125C x 3,000 hrs / 5.5 years (at 85°C)
- Electrolytic Capacitor 125C x 1,000 hrs / 1.8 years (at 85°C)

3-AXIS DEVELOPMENT: HIGHER VOLTAGE + HIGHER RIPPLE + LOWER ESR



OS-CON

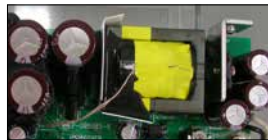
Conductive Polymer Aluminum Solid Capacitor

APPLICATION:

- > DC/DC Converters
- > Motor Control
- > Embedded Systems
- > Switching Power Supplies
- > Noise filtering
- > LED Drivers

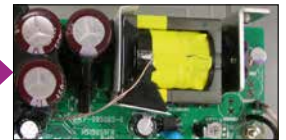
BETTER ESR/INDUCTANCE CHARACTERISTICS AT HIGH SWITCHING FREQUENCY

Capacitor choice		Electrolytic 63V390uF	OS-CON 63SXE33M		
		x3pcs	x3pcs	x2pcs	x1pc
Performance					
Area (mm ²)		386	151	101	50
Volume (mm ³)		9204	1810	1206	603
Ripple voltage (mVp-p)	25°C	40	50	68	123
	0°C	65	51	69	125
	-30°C	230	50	70	123



3 X THT ELECTROLYTIC = 1 OS-CON

Cost Reduction · Part Reduction
Miniaturization · Easier Design



CHARACTERISTIC VIEWER

Component selection					
Series	SVPE (OS-CON)	SVPE (OS-CON)	SVPE (OS-CON)	SVPE (OS-CON)	SVPE (OS-CON)
Part number		16SVPE180M	16SVPE470M	2R5SVPE330M	2R5SVPE330MY
Rated voltage [V]	100 <- 100 V 2 >= 2 V	16	16	2.5	2.5
Capacitance [uF]	2700 <- 2700 uF 10 >= 10 uF	180	470	330	330
ESR [mΩ]	450 <- 450 mΩ 5 >= 5 mΩ	11	10	15	10
Ripple current [mA rms]	7200 <- 7200 mA rms 197 >= 197 mA rms	4460	6100	3150	3860
φ [mm]	10 <- 10 mm 5 >= 5 mm	6.3	10	5	5
H [mm]	13 <- 13 mm 4 >= 4 mm	10	12.7	6	6

Easy working tool!

Just choose series or enter the parameters, to view and export the temperature and frequency characteristics on Capacitance and ESR/ESL. Simulation available for all Polymer Caps – including OS-CON. **Try now!**

<https://util01.industrial.panasonic.com/www/utilities/ds/chr-vw/view02/>

Simulation Data

